

CONTENTS  
INHALTSVERZEICHNIS  
СЪДЪРЖАНИЕ

Thread Gewinde Резба	Description Beschreibung Описание	Standard Стандарт	Form Форма	Page Seite Страница
<b>M</b>	Circular Dies Schneideisen Плашки кръгли	DIN EN 22 568 (DIN 223)	B	5
		BS 1127	A	6
	Hexagon Die Nuts Sechskant-Schneidmuttern Плашки шестостенни	DIN 382		8
	Circular Dies Schneideisen Плашки кръгли	JIS B 4451		9
<b>Mf</b>	Circular Dies Schneideisen Плашки кръгли	DIN EN 22 568 (DIN 223)	B	10
		BS 1127	A	13
	Hexagon Die Nuts Sechskant-Schneidmuttern Плашки шестостенни	DIN 382		14
	Circular Dies Schneideisen Плашки кръгли	JIS B 4451		17
<b>UNC</b>	Circular Dies Schneideisen Плашки кръгли	DIN EN 22 568 (DIN 223)	B	18
		BS 1127	A	19
	Hexagon Die Nuts Sechskant-Schneidmuttern Плашки шестостенни	DIN 382		20
<b>UNF</b>	Circular Dies Schneideisen Плашки кръгли	DIN EN 22 568 (DIN 223)	B	21
		BS 1127	A	22
	Hexagon Die Nuts Sechskant-Schneidmuttern Плашки шестостенни	DIN 382		23
<b>UNEF</b>	Circular Dies Schneideisen Плашки кръгли	DIN EN 22 568 (DIN 223)	B	24
<b>BSW</b>	Circular Dies Schneideisen Плашки кръгли	DIN EN 22 568 (DIN 223)	B	25
		BS 1127	A	26
	Hexagon Die Nuts Sechskant-Schneidmuttern Плашки шестостенни	DIN 382		27
	Circular Dies Schneideisen Плашки кръгли	JIS B 4451		28
<b>BSF</b>	Circular Dies Schneideisen Плашки кръгли	DIN EN 22 568 (DIN 223)	B	29
		BS 1127	A	30
	Hexagon Die Nuts Sechskant-Schneidmuttern Плашки шестостенни	DIN 382		31
<b>G (BSPF)</b>	Circular Dies Schneideisen Плашки кръгли	DIN EN 24 231 (DIN 5158)	B	32
		BS 1127	A	33
	Hexagon Die Nuts Sechskant-Schneidmuttern Плашки шестостенни	DIN 382		34
<b>PF (G)</b>	Circular Dies Schneideisen Плашки кръгли	JIS B 4451		35

Thread Gewinde Резба	Description Beschreibung Описание	Standard Стандарт	Form Форма	Page Seite Страница
<b>PS (Rp)</b>	Circular Dies Schneideisen Плашки кръгли	JIS B 4451		36
<b>BSPT</b>	Circular Dies Schneideisen Плашки кръгли	BS 1127	B	37
	Hexagon Die Nuts Sechskant-Schneidmuttern Плашки шестостенни	DIN 382		38
<b>NPS</b>	Circular Dies Schneideisen Плашки кръгли	JIS B 4451		39
<b>NPT</b>	Circular Dies Schneideisen Плашки кръгли	DIN EN 22 568 (DIN 223)	B	40
	Circular Dies Schneideisen Плашки кръгли	BS 1127	A	41
	Hexagon Die Nuts Sechskant-Schneidmuttern Плашки шестостенни	DIN 382		42
	Circular Dies Schneideisen Плашки кръгли	JIS B 4451		43
<b>NPTF</b>	Circular Dies Schneideisen Плашки кръгли	JIS B 4451		44
<b>PT</b>	Circular Dies Schneideisen Плашки кръгли	JIS B 4451		45
<b>PG</b>	Circular Dies Schneideisen Плашки кръгли	DIN 40434		46
<b>BA</b>	Circular Dies Schneideisen Плашки кръгли	BS 1127	A	47
	Hexagon Die Nuts Sechskant-Schneidmuttern Плашки шестостенни	DIN 382		48



## Technical Data and Information

### GRADE OF FIT

The standard execution of the dies is with grade of fit of the thread 6g. The thread profile is polished - surface roughness class Ra<1.6.

### RAKE ANGLE

In order to get better cutting results it is important to choose a suitable front angle for the specific material. A bigger rake angle is chosen for long chipping materials and a smaller one - for short chipping materials.

If the processed material is not specified by the client, we supply our dies with angles for processing of steels of average hardness (for general purposes).

### CHAMFER

HSS dies for general purposes have a chamfer length of 1.75 x P (the pitch). For special materials and cuttings this taper can be 1.25 x P, say by cutting of brass, or 2.25 x P for hard processed materials.

### SPIRAL POINT

The spiral point allows for free discharge of the shavings forward, prevents clamping of shavings in the shaving's flute and helps for reduction of the cutting force. For machine cutting of threads we recommend to our clients dies, made of HSS-E steels (with 5%Co) and with spiral point. We produce this model in the range 3 - 30 mm.

### COOLANTS AND LUBRICANTS

For better leading away of the heat, discharged by cutting and for diminution of friction, a possibly greatest volume of coolant and lubricant should be directed at the spot of cutting. The cooling stream should clean the shaving flutes from shavings and then the next cutting with the die should take place. Thus we achieve better quality of the performed threads and a greater durability of the instrument.

### STEEL

Our instruments are made of the following high speed steels:

HSS (1.3343, S6 - 5 - 2 DIN)

HSSE - Co 5% (1.3243, S6 - 5 - 2 - 5 DIN)

PM 30 - Co 8% (HS 6 - 5 - 3 - 8 DIN)

### LEFT HAND THREAD

In this catalogue dies implementation is shown only with a right-hand (normal) thread. The instruments can be produced with a left-hand thread too (designation LH).

*Way of ordering of left-hand dies, made of HSSE:     **Dies 6101 M3 LH HSSE***

### VAPORISATION

Improves the adhesion and keeps more of the cooling liquid on the tool's surface.



## Technische Angaben und Information

### TOLERANZKLASSE

Wir fertigen Schneideisen mit Toleranzklasse 6g, die Gewindeflanke ist geläpft und hat eine Rauigkeitsklasse Ra<1.6.

### SPANWINKEL

Um gute Schneidergebnisse zu erhalten, ist es wichtig, daß man einen passenden Spanwinkel zu dem entsprechenden Werkstoff wählt. Bei langspanenden Werkstoffen wählt man einen größeren Spanwinkel, kurzspannende Werkstoffe erfordern einen kleineren Spanwinkel. Wenn in der Bestellung des Kunden keine Werkstoffangaben enthalten sind, liefern wir unsere Schneideisen mit einem Spanwinkel für Stahl mittlerer Festigkeit (für den allgemeinen Gebrauch).

### ANSCHNITT

Die Schneideisen aus HSS für den allgemeinen Gebrauch haben einen Anschnitt von 1.75 x P (Steigung). Für Sonderwerkstoffe und Sonderschneiden kann dieser Anschnitt 1.25 x P sein, wie z. B. bei Bearbeitung von Messing, oder 2.25 x P bei Bearbeitung von schwer zerspanbaren Werkstoffen.

### SCHÄLANSCHNITT

Der Schälanschnitt bewirkt ein freies Abfließen der Späne nach vorne, Spänestauungen in den Spanlöchern werden dadurch vermieden und die Schneidkräfte verringert. Zum Gewindeschneiden auf Maschinen empfehlen wir unseren Kunden Schneideisen aus HSS-E (mit 5% Co) und Schälanschnitt. Diese Ausführung fertigen wir im Bereich von 3 bis 30 mm.

## KÜHL- UND SCHMIERMITTEL

Um die Zerspanungswärme abzuleiten und die Reibung zu vermindern, ist ein möglichst großes Kühl- und Schmiermittelvolumen auf die Zerspanungsstelle zu richten. Der Kühlmittelstrahl muß die Späne aus den Spannuten ausspülen und dann soll der wiederholte Gewindeschneidvorgang eingeleitet werden. Dadurch wird eine gute Qualität der zu schneidenden Gewinde erzielt und die Standzeit des Werkzeugs wird verlängert.

## STAHLARTEN

- HSS (1.3343, S6 - 5 - 2 DIN)
- HSSE - Co 5% (1.3243, S6 - 5 - 2 - 5 DIN)
- PM 30 - Co 8% (HS 6 - 5 - 3 - 8 DIN)

## LINKSGEWINDE

Im Katalog für die Schneideisen werden diese Werkzeuge nur mit Rechtsgewinde angegeben. Die Werkzeuge können auch mit Linksgewinde ausgeführt werden (Kennzeichnung LH).

*Bestellbeispiel für Schneideisen mit Linksgewinde, aus HSSE: **Schneideisen 6101 M3 LH HSSE***

## DAMPFANGELASSEN

Die Wärmebehandlung mit Wasserdampf verbessert die Adhäsion und hält mehr Kühl-und-Schmiermittel an der Werkzeugoberfläche fest.



## Технически данни и информация

### КЛАС НА ТОЧНОСТ

Стандартното изпълнение на плашките е с клас на точност на резбата 6g. Профилът на резбата е притрит и е с клас на грапавост Ra<1.6.

### ПРЕДЕН (СТРУЖКОВ) ЪГЪЛ

За да се получат добри резултати при рязане е важно да се подбере подходящ преден ъгъл за съответния материал. При материали с дълга стружка се избира по-голям преден ъгъл, а при материали с къса стружка - по-малък. Ако в поръчката на клиента не е посочен обработваемия материал, доставяме плашките с ъгли, подходящи за обработка на стомани със средна здравина (за общо предназначение).

### ВРЯЗВАЩ (ЗАХВАЩАЩ) КОНУС

Плашките от HSS стомана за общо предназначение имат връзвач конус 1.75 x P (стъпката на резбата). За специални материали и нарязвания този конус може да бъде 1.25 x P - например при нарязване на месинг, или 2.25 x P - при трудно обработваеми материали.

### ПОДТОЧВАНЕ

Подточването позволява свободно отвеждане на стружките напред. Предотвратява се натрупването на стружки в стружковите канали и се намаляват силите на рязане. За машинно нарязване на резби препоръчваме на нашите клиенти плашки, изработени от HSS-E стомана (с 5% Co) и с подточване. Произвеждаме това изпълнение в обхвата от 3 до 30 мм.

### ОХЛАЖДАЩИ И СМАЗОЧНИ СРЕДСТВА

За доброто отвеждане на топлината отделяща се при рязането и за намаляване на триенето, трябва към мястото на рязане да се насочи възможно най-голям обем охлаждаща и смазваща течност. Охлаждащата струя трябва да изчисти стружките от стружковите канали и тогава да започне повторно нарязване с плашката. Така се постига добро качество на изработваните резби и се удължава експлоатацията на инструмента.

### СТОМАНА

Нашите инструменти се изработват от следните бързорезни стомани:

- HSS (1.3343, S6 - 5 - 2 DIN)
- HSSE - Co 5% (1.3243, S6 - 5 - 2 - 5 DIN)
- PM 30 - Co 8% (HS 6 - 5 - 3 - 8 DIN)

### ЛЯВА РЕЗБА

В каталога е показано изпълнението на инструментите само с дясна (нормална) резба. Има възможност те да бъдат изработени и с лява резба (символично означение LH).

*Начин на заявяване на плашки с лява резба, произведени от HSSE: **Плашки 6101 M3 LH HSSE***

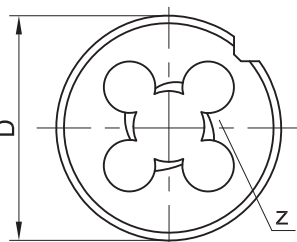
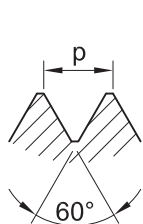
### ВАПОРИЗАЦИЯ

Термообработката с водна пара подобрява адхезията и задържа повече смазочно-охлаждаща течност по повърхността на инструмента.

**Circular Dies**  
for ISO metric thread  
according to DIN 13  
Grade of fit: 6g  
**Form B** - closed

**Runde Schneideisen**  
für metrisches ISO Regelgewinde  
nach DIN 13  
Toleranzfeld: 6g  
**Form B** - geschlossen

**Плашки кръгли**  
за метрична ISO резба  
по DIN 13  
Клас на точност: 6g  
**Форма В** - затворени



# M DIN EN 22 568 (DIN 223)

Thread Gewinde Резба	p mm	D mm	L mm	z	Art. No. 6101*..
M2	0.4	16	5	3	6101M2
M2.2	0.45	16	5	3	6101M2.2
M2.5	0.45	16	5	3	6101M2.5
M3	0.5	20	5	3	6101M3
M3.5	0.6	20	5	3	6101M3.5
M4	0.7	20	5	3	6101M4
M4.5	0.75	20	7	3	6101M4.5
M5	0.8	20	7	4	6101M5
M5.5	0.9	20	7	4	6101M5.5
M6	1.0	20	7	4	6101M6
M7	1.0	25	9	4	6101M7
M8	1.25	25	9	4	6101M8
M9	1.25	25	9	4	6101M9
M10	1.5	30	11	4	6101M10
M11	1.5	30	11	5	6101M11
M12	1.75	38	14	4	6101M12
M14	2.0	38	14	5	6101M14
M16	2.0	45	18	5	6101M16
M18	2.5	45	18	5	6101M18
M20	2.5	45	18	6	6101M20
M22	2.5	55	22	5	6101M22
M24	3.0	55	22	5	6101M24
M27	3.0	65	25	6	6101M27
M30	3.5	65	25	6	6101M30
M33	3.5	65	25	7	6101M33
M36	4.0	65	25	7	6101M36
M39	4.0	75	30	7	6101M39
M42	4.5	75	30	7	6101M42
M45	4.5	90	36	7	6101M45
M48	5.0	90	36	7	6101M48
M52	5.0	90	36	8	6101M52
M56	5.5	105	36	7	6101M56
M60	5.5	105	36	8	6101M60
M64	6	120	36	8	6101M64
M68	6	120	36	9	6101M68

Ordering example: Circular dies 6101M2 HSS  
Bestellbeispiel: Runde Schneideisen 6101M2 HSS  
Начин на заявяване: Плашки кръгли 6101M2 HSS

M  
Mf  
UNC  
UNF  
UNEF  
BSW  
BSF  
G  
PS  
BSPT  
NPS  
NPT  
NPTF  
PT  
PG  
BA

## Circular Dies

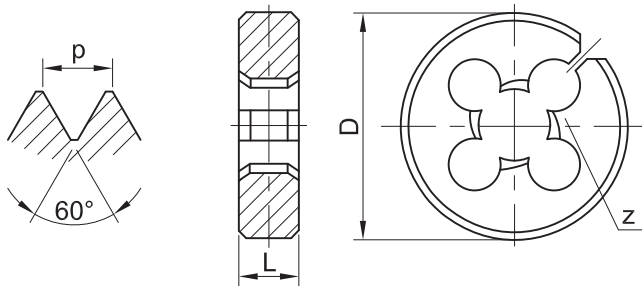
for ISO metric thread  
according to DIN 13  
Form A - cut

## Runde Schneideisen

für metrisches ISO Regelgewinde  
nach DIN 13  
Form A - geschlitzt

## Плашки кръгли

за метрична ISO резба  
по DIN 13  
Форма А - прорязани



# M BS 1127

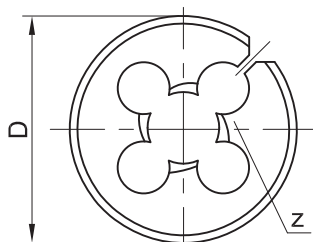
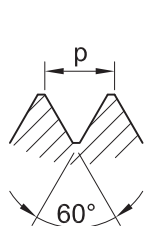
	Thread Gewinde Резба	p mm	D		L		z	Art. No. 6403*..
			inch	mm	inch	mm		
M	M2	0.4	13/16	20.6	1/4	6.35	3	6403M2
	M3	0.5	13/16	20.6	1/4	6.35	3	6403M3
G	M3.5	0.6	13/16	20.6	1/4	6.35	3	6403M3.5
	M4	0.7	13/16	20.6	1/4	6.35	3	6403M4
PS	M4.5	0.75	13/16	20.6	1/4	6.35	3	6403M4.5
	M5	0.8	13/16	20.6	1/4	6.35	4	6403M5
BSPT	M6	1.0	13/16	20.6	1/4	6.35	4	6403M6
	M7	1.0	13/16	20.6	1/4	6.35	4	6403M7
NPS	M3	0.5	1"	25.4	3/8	9.5	3	6403M3-1
	M4	0.7	1"	25.4	3/8	9.5	3	6403M4-1
NPT	M5	0.8	1"	25.4	3/8	9.5	3	6403M5-1
	M6	1.0	1"	25.4	3/8	9.5	4	6403M6-1
NPTF	M7	1.0	1"	25.4	3/8	9.5	4	6403M7-1
	M8	1.25	1"	25.4	3/8	9.5	4	6403M8
PT	M9	1.25	1"	25.4	3/8	9.5	4	6403M9
	M10	1.5	1"	25.4	3/8	9.5	5	6403M10
PG	M12	1.75	1"	25.4	3/8	9.5	6	6403M12
	M6	1.0	1" 5/16	33.4	7/16	11.1	4	6403M6-2
BA	M7	1.0	1" 5/16	33.4	7/16	11.1	4	6403M7-2
	M8	1.25	1" 5/16	33.4	7/16	11.1	4	6403M8-1
	M9	1.25	1" 5/16	33.4	7/16	11.1	4	6403M9-1
	M10	1.5	1" 5/16	33.4	7/16	11.1	4	6403M10-1
	M11	1.5	1" 5/16	33.4	7/16	11.1	5	6403M11
	M12	1.75	1" 5/16	33.4	7/16	11.1	4	6403M12-1
	M14	2.0	1" 5/16	33.4	7/16	11.1	5	6403M14
	M8	1.25	1" 1/2	38.1	1/2	12.7	4	6403M8-2
	M10	1.5	1" 1/2	38.1	1/2	12.7	4	6403M10-2
	M11	1.5	1" 1/2	38.1	1/2	12.7	5	6403M11-1
	M12	1.75	1" 1/2	38.1	1/2	12.7	4	6403M12-2
	M14	2.0	1" 1/2	38.1	1/2	12.7	5	6403M14-1
	M16	2.0	1" 1/2	38.1	1/2	12.7	5	6403M16
	M18	2.5	1" 1/2	38.1	1/2	12.7	5	6403M18
	M20	2.5	1" 1/2	38.1	1/2	12.7	6	6403M20

Ordering example: Circular dies 6403M2 HSS  
Bestellbeispiel: Runde Schneideisen 6403M2 HSS  
Начин на заявяване: Плашки кръгли 6403M2 HSS

**Circular Dies**  
for ISO metric thread  
according to DIN 13  
**Form A - cut**

**Runde Schneideisen**  
für metrisches ISO Regelgewinde  
nach DIN 13  
**Form A - geschlitzt**

**Плашки кръгли**  
за метрична ISO резба  
по DIN 13  
**Форма А - прорязани**



# M BS 1127

Thread Gewinde Резба	p mm	D		L		z	Art. No. 6403*..
		inch	mm	inch	mm		
M12	1.75	2"	50.8	5/8	15.9	4	6403M12-3
M14	2.0	2"	50.8	5/8	15.9	5	6403M14-2
M16	2.0	2"	50.8	5/8	15.9	5	6403M16-1
M18	2.5	2"	50.8	5/8	15.9	5	6403M18-1
M20	2.5	2"	50.8	5/8	15.9	6	6403M20-1
M22	2.5	2"	50.8	5/8	15.9	5	6403M22
M24	3.0	2"	50.8	5/8	15.9	5	6403M24
M27	3.0	3"	76.2	7/8	22.2	6	6403M27
M30	3.5	3"	76.2	7/8	22.2	6	6403M30
M33	3.5	3"	76.2	7/8	22.2	7	6403M33
M36	4.0	3"	76.2	7/8	22.2	7	6403M36
M39	4.0	3"	76.2	7/8	22.2	7	6403M39
M42	4.5	4"	101.6	1"	25.4	7	6403M42
M45	4.5	4"	101.6	1"	25.4	7	6403M45
M48	5.0	4"	101.6	1"	25.4	7	6403M48

Ordering example: Circular dies 6403M12-3 HSS  
Bestellbeispiel: Runde Schneideisen 6403M12-3 HSS  
Начин на заявяване: Плашки кръгли 6403M12-3 HSS

- M
- Mf
- UNC
- UNF
- UNEF
- BSW
- BSF
- G
- PS
- BSPT
- NPS
- NPT
- NPTF
- PT
- PG
- BA

## Hexagon Die Nuts

for ISO metric thread  
according to DIN 13  
Grade of fit: 6g

## Sechskant-Schneidmuttern

für metrisches ISO Regelgewinde  
nach DIN 13  
Toleranzfeld: 6g

## Плашки шестостенни

за метрична ISO резба  
по DIN 13  
Клас на точност: 6g

M

Mf

UNC

UNF

UNEF

BSW

BSF

G

PS

BSPT

NPS

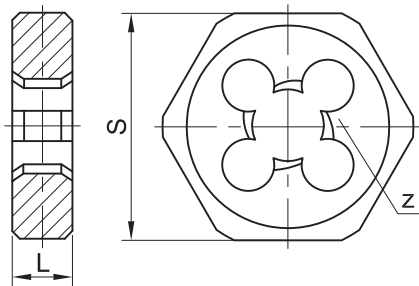
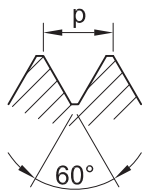
NPT

NPTF

PT

PG

BA



# M DIN 382

	Thread Gewinde Резба	p mm	S mm	L mm	z	Art. No. 7101*..
	M3	0.5	19	5	3	7101M3
	M4	0.7	19	5	3	7101M4
	M5	0.8	19	7	4	7101M5
	M6	1.0	19	7	4	7101M6
	M7	1.0	22	9	4	7101M7
	M8	1.25	22	9	4	7101M8
	M10	1.5	27	11	4	7101M10
	M12	1.75	36	14	4	7101M12
	M14	2.0	36	14	5	7101M14
	M16	2.0	41	18	5	7101M16
	M18	2.5	41	18	5	7101M18
	M20	2.5	41	18	6	7101M20
	M22	2.5	50	22	5	7101M22
	M24	3.0	50	22	5	7101M24
	M27	3.0	60	25	6	7101M27
	M30	3.5	60	25	6	7101M30
	M33	3.5	60	25	7	7101M33
	M36	4.0	60	25	7	7101M36
	M39	4.0	70	30	7	7101M39
	M42	4.5	70	30	7	7101M42
	M45	4.5	85	36	7	7101M45
	M48	5.0	85	36	7	7101M48
	M52	5.0	85	36	8	7101M52
	M56	5.5	100	36	7	7101M56
	M60	5.5	100	36	8	7101M60
	M64	6.0	100	36	9	7101M64
	M68	6.0	115	36	9	7101M68

Ordering example:

Bestellbeispiel:

Начин на заявяване:

Hexagon die nuts 7101M3 HSS

Sechskant Schneidmuttern 7101M3 HSS

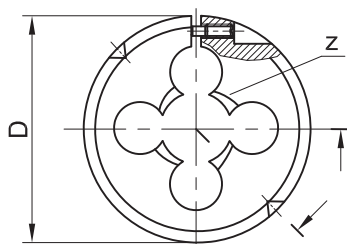
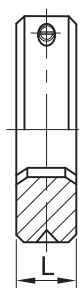
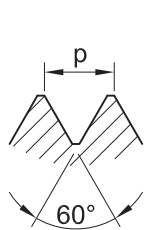
Плашки шестостенни 7101M3 HSS



**Circular Dies**  
for ISO metric thread  
according to DIN 13

**Runde Schneideisen**  
für metrisches ISO Regelgewinde  
nach DIN 13

**Плашки кръгли**  
за метрична ISO резба  
по DIN 13



# M JIS B 4451

Thread Gewinde Резба	p mm	D mm	L mm	z	Art. No. 6703*..
M3	0.5	25	9	3	6703M3
M3.5	0.6	25	9	3	6703M3.5
M4	0.7	25	9	3	6703M4
M5	0.8	25	9	3	6703M5
M6	1.0	25	9	4	6703M6
M7	1.0	25	9	4	6703M7
M8	1.25	25	9	4	6703M8
M10	1.5	25	9	4	6703M10
M5	0.8	38	13	4	6703M5-1
M6	1.0	38	13	4	6703M6-1
M7	1.0	38	13	4	6703M7-1
M8	1.25	38	13	4	6703M8-1
M10	1.5	38	13	4	6703M10-1
M12	1.75	38	13	4	6703M12
M14	2.0	38	13	5	6703M14
M16	2.0	38	13	5	6703M16
M8	1.25	50	16	4	6703M8-2
M10	1.5	50	16	4	6703M10-2
M12	1.75	50	16	4	6703M12-1
M14	2.0	50	16	4	6703M14-1
M16	2.0	50	16	4	6703M16-1
M18	2.5	50	16	5	6703M18
M20	2.5	50	16	5	6703M20
M22	2.5	50	16	6	6703M22
M24	3.0	50	16	6	6703M24
M22	2.5	63	20	6	6703M22-1
M24	3.0	63	20	6	6703M24-1
M27	3.0	63	20	6	6703M27
M30	3.5	63	20	6	6703M30
M33	3.5	63	20	6	6703M33
M36	4.0	63	20	6	6703M36

Ordering example: Circular dies 6703M3 HSS  
Bestellbeispiel: Runde Schneideisen 6703M3 HSS  
Начин на заявяване: Плашки кръгли 6703M3 HSS

M  
Mf  
UNC  
UNF  
UNEF  
BSW  
BSF  
G  
PS  
BSPT  
NPS  
NPT  
NPTF  
PT  
PG  
BA

### Circular Dies

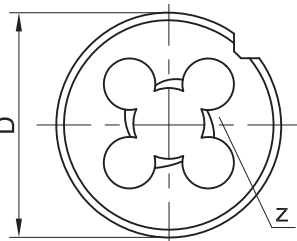
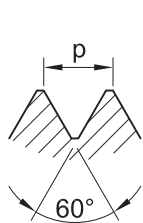
for ISO metric Fine thread  
according to DIN 13  
Grade of fit: 6g  
**Form B** - closed

### Runde Schneideisen

für metrisches ISO Feingewinde  
nach DIN 13  
Toleranzfeld: 6g  
**Form B** - geschlossen

### Плашки кръгли

за метрична ISO резба  
ситна стъпка по DIN 13  
Клас на точност: 6g  
**Форма В** - затворени



## Mf DIN EN 22 568 (DIN 223)

	Thread Gewinde Резба	p mm	D mm	L mm	z	Art. No. 6201*..
	M4	0.35	20	5	3	6201M4x0.35
	M4	0.5	20	5	3	6201M4x0.5
G	M5	0.5	20	5	4	6201M5x0.5
	M5	0.75	20	7	4	6201M5x0.75
	M6	0.5	20	5	4	6201M6x0.5
	M6	0.75	20	7	4	6201M6x0.75
PS	M7	0.75	25	9	4	6201M7x0.75
	M8	0.5	25	9	4	6201M8x0.5
	M8	0.75	25	9	4	6201M8x0.75
	M8	1.0	25	9	4	6201M8x1
BSPT	M9	0.75	25	9	4	6201M9x0.75
	M9	1.0	25	9	4	6201M9x1
	M10	0.75	30	11	4	6201M10x0.75
	M10	1.0	30	11	4	6201M10x1
NPS	M10	1.25	30	11	4	6201M10x1.25
	M11	1.0	30	11	5	6201M11x1
	M11	1.25	30	11	5	6201M11x1.25
NPT	M12	0.75	38	10	4	6201M12x0.75
	M12	1.0	38	10	4	6201M12x1
	M12	1.25	38	10	4	6201M12x1.25
	M12	1.5	38	10	4	6201M12x1.5
NPTF	M13	1.0	38	10	5	6201M13x1
	M13	1.5	38	10	5	6201M13x1.5
	M14	0.75	38	10	5	6201M14x0.75
	M14	1.0	38	10	5	6201M14x1
PT	M14	1.25	38	10	5	6201M14x1.25
	M14	1.5	38	10	5	6201M14x1.5
	M15	1.0	38	10	5	6201M15x1
	M15	1.5	38	10	5	6201M15x1.5
PG	M16	1.0	45	14	5	6201M16x1
	M16	1.25	45	14	5	6201M16x1.25
	M16	1.5	45	14	5	6201M16x1.5
	M18	1.0	45	14	5	6201M18x1
BA	M18	1.25	45	14	5	6201M18x1.25
	M18	1.5	45	14	5	6201M18x1.5
	M18	2.0	45	14	5	6201M18x2
	M20	1.0	45	14	6	6201M20x1
	M20	1.25	45	14	6	6201M20x1.25

Ordering example:  
Bestellbeispiel:  
Начин на заявяване:

Circular dies 6201M4x0.35 HSS  
Runde Schneideisen 6201M4x0.35 HSS  
Плашки кръгли 6201M4x0.35 HSS

### Circular Dies

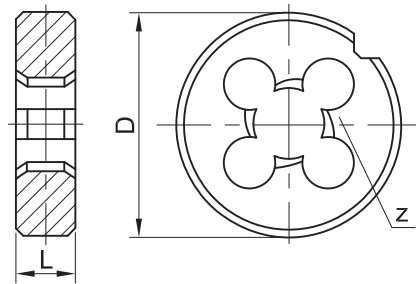
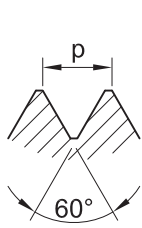
for ISO metric Fine thread  
according to DIN 13  
Grade of fit: 6g  
**Form B** - closed

### Runde Schneideisen

für metrisches ISO Feingewinde  
nach DIN 13  
Toleranzfeld: 6g  
**Form B** - geschlossen

### Плашки кръгли

за метрична ISO резба  
ситна стъпка по DIN 13  
Клас на точност: 6g  
**Форма В** - затворени



## Mf DIN EN 22 568 (DIN 223)

Thread Gewinde Резба	p mm	D mm	L mm	z	Art. No. 6201*..
M20	1.5	45	14	6	6201M20x1.5
M20	2.0	45	14	6	6201M20x2
M21	1.5	45	14	6	6201M21x1.5
M22	1.0	55	16	5	6201M22x1
M22	1.25	55	16	5	6201M22x1.25
M22	1.5	55	16	5	6201M22x1.5
M22	2.0	55	16	5	6201M22x2
M24	1.0	55	16	5	6201M24x1
M24	1.25	55	16	5	6201M24x1.25
M24	1.5	55	16	5	6201M24x1.5
M24	2.0	55	16	5	6201M24x2
M25	1.0	55	16	5	6201M25x1
M25	1.5	55	16	5	6201M25x1.5
M26	1.0	55	16	6	6201M26x1
M26	1.5	55	16	6	6201M26x1.5
M26	2.0	55	16	6	6201M26x2
M27	1.0	65	18	6	6201M27x1
M27	1.5	65	18	6	6201M27x1.5
M27	2.0	65	18	6	6201M27x2
M28	1.0	65	18	6	6201M28x1
M28	1.5	65	18	6	6201M28x1.5
M28	2.0	65	18	6	6201M28x2
M29	1.5	65	18	6	6201M29x1.5
M30	1.0	65	18	6	6201M30x1
M30	1.5	65	18	6	6201M30x1.5
M30	2.0	65	18	6	6201M30x2
M30	2.5	65	18	6	6201M30x2.5
M30	3.0	65	25	6	6201M30x3
M32	1.5	65	18	7	6201M32x1.5
M32	2.0	65	18	7	6201M32x2
M32	3.0	65	25	7	6201M32x3
M33	1.5	65	18	7	6201M33x1.5
M33	2.0	65	18	7	6201M33x2
M33	3.0	65	25	7	6201M33x3
M34	1.5	65	18	7	6201M34x1.5
M34	2.0	65	18	7	6201M34x2
M35	1.5	65	18	7	6201M35x1.5
M36	1.5	65	18	7	6201M36x1.5

Ordering example: Circular dies 6201M20x1.5 HSS  
Bestellbeispiel: Runde Schneideisen 6201M20x1.5 HSS  
Начин на заявяване: Плашки кръгли 6201M20x1.5 HSS

M  
Mf  
UNC  
UNF  
UNEF  
BSW  
BSF  
G  
PS  
BSPT  
NPS  
NPT  
NPTF  
PT  
PG  
BA

### Circular Dies

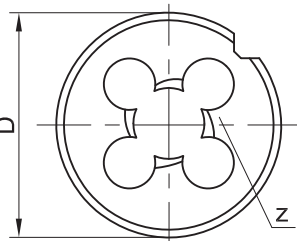
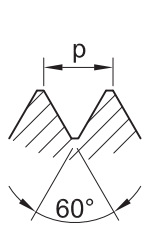
for ISO metric Fine thread  
according to DIN 13  
Grade of fit: 6g  
**Form B** - closed

### Runde Schneideisen

für metrisches ISO Feingewinde  
nach DIN 13  
Toleranzfeld: 6g  
**Form B** - geschlossen

### Плашки кръгли

за метрична ISO резба  
ситна стъпка по DIN 13  
Клас на точност: 6g  
**Форма В** - затворени



## Mf DIN EN 22 568 (DIN 223)

	Thread Gewinde Резба	p mm	D mm	L mm	z	Art. No. 6201*..
	M36	2.0	65	18	7	6201M36x2
	M36	3.0	65	25	7	6201M36x3
	M38	1.5	75	20	7	6201M38x1.5
	M39	1.5	75	20	7	6201M39x1.5
	M39	2.0	75	20	7	6201M39x2
	M39	3.0	75	30	7	6201M39x3
	M40	1.5	75	20	7	6201M40x1.5
	M40	2.0	75	20	7	6201M40x2
	M40	3.0	75	30	7	6201M40x3
	M42	1.5	75	20	7	6201M42x1.5
	M42	2.0	75	20	7	6201M42x2
	M42	3.0	75	30	7	6201M42x3
	M45	1.5	90	22	7	6201M45x1.5
	M45	2.0	90	22	7	6201M45x2
	M45	3.0	90	36	7	6201M45x3
	M48	1.5	90	22	7	6201M48x1.5
	M48	2.0	90	22	7	6201M48x2
	M48	3.0	90	36	7	6201M48x3
	M50	1.5	90	22	8	6201M50x1.5
	M50	2.0	90	22	8	6201M50x2
	M50	3.0	90	36	8	6201M50x3
	M52	1.5	90	22	8	6201M52x1.5
	M52	2.0	90	22	8	6201M52x2
	M52	3.0	90	36	8	6201M52x3

Ordering example: Circular dies 6201M36x2 HSS  
Bestellbeispiel: Runde Schneideisen 6201M36x2 HSS  
Начин на заявяване: Плашки кръгли 6201M36x2 HSS

## Circular Dies

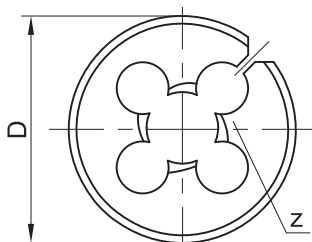
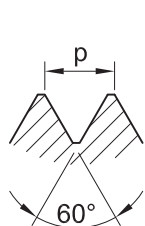
for ISO metric Fine thread  
according to DIN 13  
Form A - cut

## Runde Schneideisen

für metrisches ISO Feingewinde  
nach DIN 13  
Form A - geschlitzt

## Плашки кръгли

за метрична ISO резба  
ситна стъпка по DIN 13  
Форма А - прорязани



# Mf BS 1127

Thread Gewinde Резба	p mm	D		L		z	Art. No. 6403*..
		inch	mm	inch	mm		
M3	0.35	13/16	20.6	1/4	6.35	3	6403M3x0.35
M4	0.5	13/16	20.6	1/4	6.35	3	6403M4x0.5
M5	0.5	13/16	20.6	1/4	6.35	3	6403M5x0.5
M6	0.75	13/16	20.6	1/4	6.35	4	6403M6x0.75
M6	0.75	1"	25.4	3/8	9.5	4	6403M6x0.75-1
M8	1.0	1"	25.4	3/8	9.5	4	6403M8x1
M10	1.0	1"	25.4	3/8	9.5	4	6403M10x1
M10	1.25	1"	25.4	3/8	9.5	4	6403M10x1.25
M12	1.0	1" 5/16	33.4	7/16	11.1	5	6403M12x1
M12	1.25	1" 5/16	33.4	7/16	11.1	5	6403M12x1.25
M12	1.5	1" 5/16	33.4	7/16	11.1	5	6403M12x1.5
M14	1.25	1" 1/2	38.1	1/2	12.7	5	6403M14x1.25
M14	1.5	1" 1/2	38.1	1/2	12.7	5	6403M14x1.5
M16	1.5	1" 1/2	38.1	1/2	12.7	5	6403M16x1.5
M18	1.5	1" 1/2	38.1	1/2	12.7	5	6403M18x1.5
M20	1.0	1" 1/2	38.1	1/2	12.7	6	6403M20x1
M20	1.5	2"	50.8	5/8	15.9	6	6403M20x1.5
M22	1.5	2"	50.8	5/8	15.9	5	6403M22x1.5
M24	1.5	2"	50.8	5/8	15.9	5	6403M24x1.5
M25	1.5	2"	50.8	5/8	15.9	5	6403M25x1.5

Ordering example: Circular dies 6403M3x0.35 HSS  
Bestellbeispiel: Runde Schneideisen 6403M3x0.35 HSS  
Начин на заявяване: Плашки кръгли 6403M3x0.35 HSS

- M
- Mf
- UNC
- UNF
- UNEF
- BSW
- BSF
- G
- PS
- BSPT
- NPS
- NPT
- NPTF
- PT
- PG
- BA

## Hexagon Die Nuts

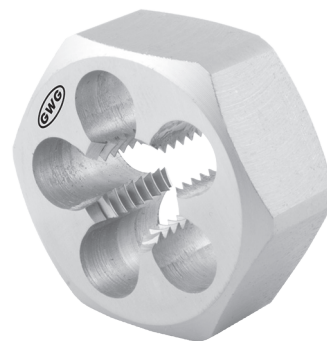
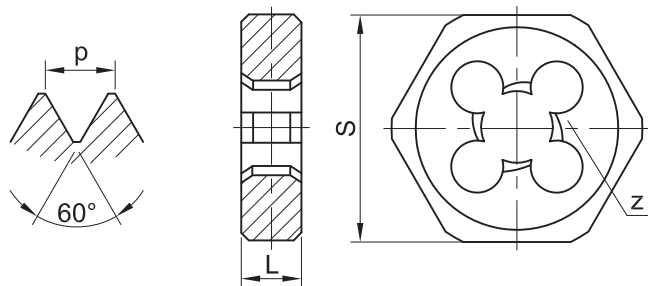
for ISO metric Fine thread  
according to DIN 13  
Grade of fit: 6g

## Sechskant-Schneidmuttern

für metrisches ISO Feingewinde  
nach DIN 13  
Toleranzfeld: 6g

## Плашки шестостенни

за метрична ISO резба  
ситна стъпка по DIN 13  
Клас на точност: 6g



# Mf DIN 382

	Thread Gewinde Резба	p mm	S mm	L mm	Z	Art. No. 7201*..
	M3	0.35	19	5	3	7201M3x0.35
BSF	M4	0.35	19	5	3	7201M4x0.35
	M4	0.5	19	5	3	7201M4x0.5
G	M5	0.5	19	5	4	7201M5x0.5
	M5	0.75	19	7	4	7201M5x0.75
	M6	0.5	19	5	4	7201M6x0.5
PS	M6	0.75	19	7	4	7201M6x0.75
	M7	0.75	22	9	4	7201M7x0.75
	M8	0.5	22	9	4	7201M8x0.5
BSPT	M8	0.75	22	9	4	7201M8x0.75
	M8	1.0	22	9	4	7201M8x1
	M9	0.75	22	9	4	7201M9x0.75
NPS	M9	1.0	22	9	4	7201M9x1
	M10	0.75	27	11	4	7201M10x0.75
	M10	1.0	27	11	4	7201M10x1
NPT	M10	1.25	27	11	4	7201M10x1.25
	M11	1.0	27	11	4	7201M11x1
	M11	1.25	27	11	5	7201M11x1.25
NPTF	M12	0.75	36	10	4	7201M12x0.75
	M12	1.0	36	10	4	7201M12x1
	M12	1.25	36	10	4	7201M12x1.25
PT	M12	1.5	36	10	4	7201M12x1.5
	M13	1.0	36	10	5	7201M13x1
	M13	1.5	36	10	5	7201M13x1.5
PG	M14	0.75	36	10	5	7201M14x0.75
	M14	1.0	36	10	5	7201M14x1
	M14	1.25	36	10	5	7201M14x1.25
BA	M14	1.5	36	10	5	7201M14x1.5
	M15	1.0	36	10	5	7201M15x1
	M15	1.5	36	10	5	7201M15x1.5
	M16	1.0	41	14	5	7201M16x1
	M16	1.25	41	14	5	7201M16x1.25
	M16	1.5	41	14	5	7201M16x1.5
	M18	1.0	41	14	5	7201M18x1
	M18	1.25	41	14	5	7201M18x1.25
	M18	1.5	41	14	5	7201M18x1.5
	M18	2.0	41	14	5	7201M18x2
	M20	1.0	41	14	6	7201M20x1
	M20	1.25	41	14	6	7201M20x1.25
	M20	1.5	41	14	6	7201M20x1.5
	M20	2.0	41	14	6	7201M20x2

Ordering example:

Hexagon die nuts 7201M3x0.35 HSS

Bestellbeispiel:

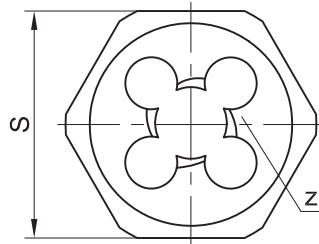
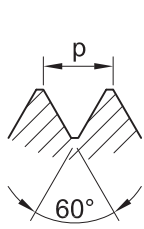
Sechskant Schneidmuttern 7201M3x0.35 HSS

Начин на заявяване:

Плашки шестостенни 7201M3x0.35 HSS

## Hexagon Die Nuts

for ISO metric Fine thread  
according to DIN 13  
Grade of fit: 6g

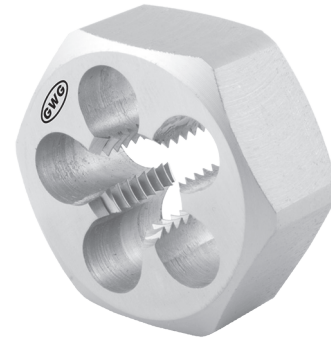


## Sechskant-Schneidmuttern

für metrisches ISO Feingewinde  
nach DIN 13  
Toleranzfeld: 6g

## Плашки шестостенни

за метрична ISO резба  
ситна стъпка по DIN 13  
Клас на точност: 6g



M

Mf

UNC

UNF

UNEF

BSW

BSF

G

PS

BSPT

NPS

NPT

NPTF

PT

PG

BA

# Mf DIN 382

Thread Gewinde Резба	p mm	S mm	L mm	z	Art. No. 7201*..
M21	1.5	41	14	6	7201M21x1.5
M22	1.0	50	16	5	7201M22x1
M22	1.25	50	16	5	7201M22x1.25
M22	1.5	50	16	5	7201M22x1.5
M22	2.0	50	16	5	7201M22x2
M23	1.5	50	16	5	7201M23x1.5
M24	1.0	50	16	5	7201M24x1
M24	1.25	50	16	5	7201M24x1.25
M24	1.5	50	16	5	7201M24x1.5
M24	2.0	50	16	5	7201M24x2
M25	1.0	50	16	5	7201M25x1
M25	1.5	50	16	5	7201M25x1.5
M26	1.0	50	16	6	7201M26x1
M26	1.5	50	16	6	7201M26x1.5
M26	2.0	50	16	6	7201M26x2
M27	1.5	60	18	6	7201M27x1.5
M27	2.0	60	18	6	7201M27x2
M28	1.0	60	18	6	7201M28x1
M28	1.5	60	18	6	7201M28x1.5
M28	2.0	60	18	6	7201M28x2
M29	1.5	60	18	6	7201M29x1.5
M30	1.0	60	18	6	7201M30x1
M30	1.5	60	18	6	7201M30x1.5
M30	2.0	60	18	6	7201M30x2
M30	3.0	60	25	6	7201M30x3
M32	1.5	60	18	7	7201M32x1.5
M32	2.0	60	18	7	7201M32x2
M32	3.0	60	25	7	7201M32x3
M33	1.5	60	18	7	7201M33x1.5
M33	2.0	60	18	7	7201M33x2
M33	3.0	60	25	7	7201M33x3
M34	1.5	60	18	7	7201M34x1.5
M34	2.0	60	18	7	7201M34x2
M35	1.5	60	18	7	7201M35x1.5
M36	1.5	60	18	7	7201M36x1.5
M36	2.0	60	18	7	7201M36x2
M36	3.0	60	25	7	7201M36x3
M38	1.5	70	20	7	7201M38x1.5
M39	1.5	70	20	7	7201M39x1.5
M39	2.0	70	20	7	7201M39x2
M39	3.0	70	30	7	7201M39x3

Ordering example: Hexagon die nuts 7201M21x1.5 HSS  
 Bestellbeispiel: Sechskant Schneidmuttern 7201M21x1.5 HSS  
 Начин на заявяване: Плашки шестостенни 7201M21x1.5 HSS

## Hexagon Die Nuts

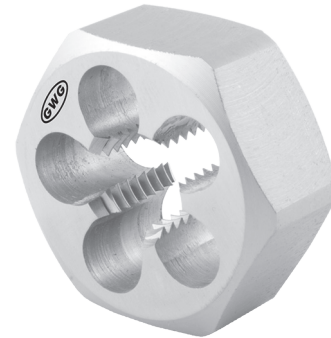
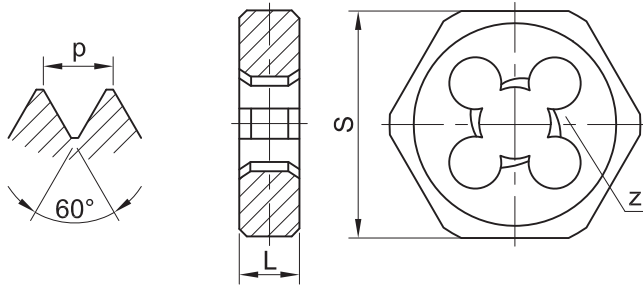
for ISO metric Fine thread  
according to DIN 13  
Grade of fit: 6g

## Sechskant-Schneidmuttern

für metrisches ISO Feingewinde  
nach DIN 13  
Toleranzfeld: 6g

## Плашки шестостенни

за метрична ISO резба  
ситна стъпка по DIN 13  
Клас на точност: 6g



# Mf DIN 382

	Thread Gewinde Резба	p mm	S mm	L mm	z	Art. No. 7201*..
	M40	1.5	70	20	7	7201M40x1.5
BSF	M40	2.0	70	20	7	7201M40x2
	M40	3.0	70	30	7	7201M40x3
	M42	1.5	70	20	7	7201M42x1.5
	M42	2.0	70	20	7	7201M42x2
G	M42	3.0	70	30	7	7201M42x3
	M45	1.5	85	22	7	7201M45x1.5
	M45	2.0	85	22	7	7201M45x2
	M45	3.0	85	36	7	7201M45x3
PS	M48	1.5	85	22	7	7201M48x1.5
	M48	2.0	85	22	7	7201M48x2
	M48	3.0	85	36	7	7201M48x3
BSPT	M50	1.5	85	22	7	7201M50x1.5
	M50	2.0	85	22	8	7201M50x2
	M50	3.0	85	36	7	7201M50x3
	M52	1.5	85	22	8	7201M52x1.5
NPS	M52	2.0	85	22	8	7201M52x2
	M52	3.0	85	36	8	7201M52x3

BSW

BSF

G

PS

BSPT

NPS

NPT

NPTF

PT

PG

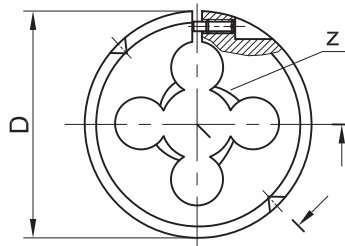
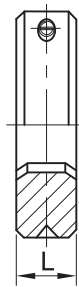
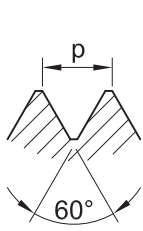
BA

Ordering example: Hexagon die nuts 7201M40x1.5 HSS  
Bestellbeispiel: Sechskant Schneidmuttern 7201M40x1.5 HSS  
Начин на заявяване: Плашки шестостенни 7201M40x1.5 HSS



### Circular Dies

for ISO metric Fine thread  
according to DIN 13



### Runde Schneideisen

für metrisches ISO Feingewinde  
nach DIN 13

### Плашки кръгли

за метрична ISO резба  
ситна стъпка по DIN 13



M

Mf

UNC

UNF

UNEF

BSW

BSF

G

PS

BSPT

NPS

NPT

NPTF

PT

PG

BA

# Mf JIS B 4451

Thread Gewinde Резба	p mm	D mm	L mm	z	Art. No. 6803*..
M8	0.75	25	9	4	6803M8x0.75
M8	1.0	25	9	4	6803M8x1
M10	1.0	25	9	4	6803M10x1
M10	1.25	25	9	4	6803M10x1.25
M8	0.75	38	13	4	6803M8x0.75-1
M8	1.0	38	13	4	6803M8x1-1
M10	1.0	38	13	4	6803M10x1-1
M10	1.25	38	13	4	6803M10x1.25-1
M12	1.0	38	13	4	6803M12x1
M12	1.5	38	13	4	6803M12x1.5
M14	1.0	38	13	5	6803M14x1
M14	1.5	38	13	5	6803M14x1.5
M16	1.0	38	13	5	6803M16x1
M16	1.5	38	13	5	6803M16x1.5
M10	1.0	50	16	4	6803M10x1-2
M10	1.25	50	16	4	6803M10x1.25-2
M12	1.0	50	16	4	6803M12x1-1
M12	1.25	50	16	4	6803M12x1.25
M12	1.5	50	16	4	6803M12x1.5-1
M14	1.0	50	16	4	6803M14x1-1
M14	1.25	50	16	4	6803M14x1.25
M14	1.5	50	16	4	6803M14x1.5-1
M16	1.0	50	16	4	6803M16x1-1
M16	1.5	50	16	4	6803M16x1.5-1
M18	1.0	50	16	5	6803M18x1
M18	1.5	50	16	5	6803M18x1.5
M20	1.0	50	16	5	6803M20x1
M20	1.5	50	16	5	6803M20x1.5
M22	1.0	50	16	6	6803M22x1
M22	1.5	50	16	6	6803M22x1.5
M24	1.0	50	16	6	6803M24x1
M24	1.5	50	16	6	6803M24x1.5
M22	1.0	63	20	6	6803M22x1-1
M22	1.5	63	20	6	6803M22x1.5-1
M24	1.0	63	20	6	6803M24x1-1
M24	1.5	63	20	6	6803M24x1.5-1
M27	1.5	63	20	6	6803M27x1.5
M27	2.0	63	20	6	6803M27x2
M30	1.5	63	20	6	6803M30x1.5
M33	1.5	63	20	6	6803M33x1.5
M36	1.5	63	20	6	6803M36x1.5

Ordering example: Circular dies 6803M8x0.75 HSS  
 Bestellbeispiel: Runde Schneideisen 6803M8x0.75 HSS  
 Начин на заявяване: Плашки кръгли 6803M8x0.75 HSS

### Circular Dies

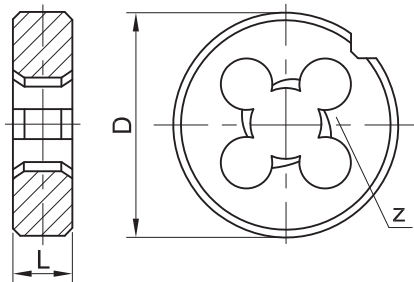
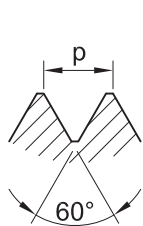
for American Unified Coarse  
thread according to ANSI B1.1  
**Form B - closed**

### Runde Schneideisen

für amerikanisches unifiziertes  
Grobgewinde nach ANSI B1.1  
**Form B - geschlossen**

### Плашки кръгли

за американска унифицирана  
резба едра стъпка по ANSI B1.1  
**Форма В - затворени**



## UNC DIN EN 22 568 (DIN 223)

	Thread Gewinde Резба	p / inch	D mm	L mm	z	Art. No. 6111*..
	UNC Nr.4	40	20	5	3	6111UNCNr.4x40
	UNC Nr.5	40	20	5	3	6111UNCNr.5x40
	UNC Nr.6	32	20	7	3	6111UNCNr.6x32
	UNC Nr.8	32	20	7	3	6111UNCNr.8x32
	UNC Nr.10	24	20	7	3	6111UNCNr.10x24
	UNC Nr.12	24	20	7	4	6111UNCNr.12x24
	UNC 1/4	20	20	7	4	6111UNC1/4x20
	UNC 5/16	18	25	9	4	6111UNC5/16x18
	UNC 3/8	16	30	11	4	6111UNC3/8x16
	UNC 7/16	14	30	11	4	6111UNC7/16x14
	UNC 1/2	13	38	14	4	6111UNC1/2x13
	UNC 9/16	12	38	14	4	6111UNC9/16x12
	UNC 5/8	11	45	18	4	6111UNC5/8x11
	UNC 3/4	10	45	18	5	6111UNC3/4x10
	UNC 7/8	9	55	22	5	6111UNC7/8x9
	UNC 1"	8	55	22	5	6111UNC1"x8
	UNC 1"1/8	7	65	25	6	6111UNC1"1/8x7
	UNC 1"1/4	7	65	25	6	6111UNC1"1/4x7
	UNC 1"3/8	6	65	25	7	6111UNC1"3/8x6
	UNC 1"1/2	6	65	25	7	6111UNC1"1/2x6
	UNC 1"1/2	6	75	30	7	6111UNC1"1/2x6-1
	UNC 1"5/8	5	75	30	7	6111UNC1"5/8x5
	UNC 1"3/4	5	90	36	7	6111UNC1"3/4x5
	UNC 1"7/8	4.5	90	36	7	6111UNC1"7/8x4.5
	UNC 2"	4.5	90	36	7	6111UNC2"x4.5

Ordering example: Circular dies 6111UNCNr.4x40 HSS  
 Bestellbeispiel: Runde Schneideisen 6111UNCNr.4x40 HSS  
 Начин на заявяване: Плашки кръгли 6111UNCNr.4x40 HSS

## Circular Dies

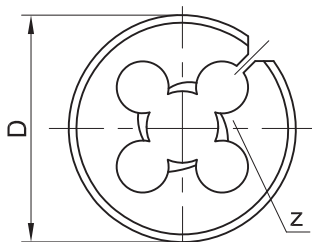
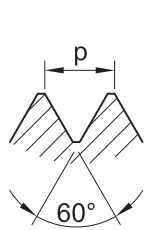
for American Unified Coarse  
thread according to ANSI B1.1  
Form A - cut

## Runde Schneideisen

für amerikanisches unifiziertes  
Grobgewinde nach ANSI B1.1  
Form A - geschlitzt

## Плашки кръгли

за американска унифицирана  
резба едра стъпка по ANSI B1.1  
Форма А - прорязани



# UNC BS 1127

Thread Gewinde Резба	p / inch	D		L		z	Art. No. 6413*..
		inch	mm	inch	mm		
Nr. 4	40	13/16	20.6	1/4	6.35	3	6413Nr.4x40
Nr. 5	40	13/16	20.6	1/4	6.35	3	6413Nr.5x40
Nr. 6	32	13/16	20.6	1/4	6.35	3	6413Nr.6x32
Nr. 8	32	13/16	20.6	1/4	6.35	3	6413Nr.8x32
Nr. 10	24	13/16	20.6	1/4	6.35	3	6413Nr.10x24
Nr. 12	24	13/16	20.6	1/4	6.35	4	6413Nr.12x24
UNC 1/4	20	1"	25.4	3/8	9.5	4	6413UNC1/4x20
UNC 5/16	18	1"	25.4	3/8	9.5	4	6413UNC5/16x18
UNC 3/8	16	1"	25.4	3/8	9.5	4	6413UNC3/8x16
UNC 1/4	20	1" 5/16	33.4	7/16	11.1	4	6413UNC1/4x20-1
UNC 5/16	18	1" 5/16	33.4	7/16	11.1	4	6413UNC5/16x18-1
UNC 3/8	16	1" 5/16	33.4	7/16	11.1	4	6413UNC3/8x16-1
UNC 7/16	14	1" 5/16	33.4	7/16	11.1	4	6413UNC7/16x14
UNC 1/2	13	1" 5/16	33.4	7/16	11.1	4	6413UNC1/2x13
UNC 9/16	12	1" 5/16	33.4	7/16	11.1	5	6413UNC9/16x12
UNC 3/8	16	1" 1/2	38.1	1/2	12.7	4	6413UNC3/8x16-2
UNC 7/16	14	1" 1/2	38.1	1/2	12.7	4	6413UNC7/16x14-1
UNC 1/2	13	1" 1/2	38.1	1/2	12.7	4	6413UNC1/2x13-1
UNC 9/16	12	1" 1/2	38.1	1/2	12.7	5	6413UNC9/16x12-1
UNC 5/8	11	1" 1/2	38.1	1/2	12.7	4	6413UNC5/8x11
UNC 3/4	10	1" 1/2	38.1	1/2	12.7	5	6413UNC3/4x10
UNC 7/8	9	2"	50.8	5/8	15.9	5	6413UNC7/8x9
UNC 1"	8	2"	50.8	5/8	15.9	5	6413UNC1"x8

Ordering example:  
Bestellbeispiel:  
Начин на заявяване:

Circular dies 6413UNCNr.4x40 HSS  
Runde Schneideisen 6413UNCNr.4x40 HSS  
Плашки кръгли 6413UNCNr.4x40 HSS

M  
Mf  
UNC  
UNF  
UNEF  
BSW  
BSF  
G  
PS  
BSPT  
NPS  
NPT  
NPTF  
PT  
PG  
BA

## Hexagon Die Nuts

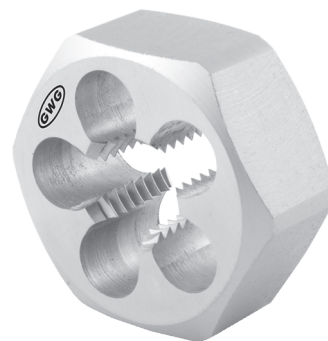
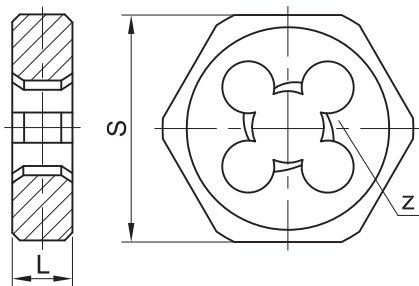
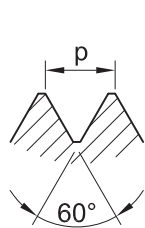
for American Unified Coarse  
thread according to ANSI B1.1

## Sechskant-Schneidmuttern

für amerikanisches unifiziertes  
Grobgewinde nach ANSI B1.1

## Плашки шестостенни

за американска унифицирана  
резба едра стъпка по ANSI B1.1



# UNC DIN 382

	Thread Gewinde Резба	p / inch	S mm	L mm	z	Art. No. 7111*..
BSF	UNC 1/4	20	19	7	4	7111UNC1/4x20
	UNC 5/16	18	22	9	4	7111UNC5/16x18
	UNC 3/8	16	27	11	4	7111UNC3/8x16
G	UNC 7/16	14	27	11	4	7111UNC7/16x14
	UNC 1/2	13	36	14	4	7111UNC1/2x13
	UNC 9/16	12	36	14	4	7111UNC9/16x12
PS	UNC 5/8	11	41	18	4	7111UNC5/8x11
	UNC 3/4	10	41	18	5	7111UNC3/4x10
	UNC 7/8	9	50	22	5	7111UNC7/8x9
BSPT	UNC 1"	8	50	22	5	7111UNC1"x8
	UNC 1"1/8	7	60	25	6	7111UNC1"1/8x7
	UNC 1"1/4	7	60	25	6	7111UNC1"1/4x7
NPS	UNC 1"3/8	6	60	25	7	7111UNC1"3/8x6
	UNC 1"1/2	6	70	30	7	7111UNC1"1/2x6
	UNC 1"3/4	5	85	36	7	7111UNC1"3/4x5
	UNC 2"	4.5	85	36	7	7111UNC2"x4.5

Ordering example:  
Bestellbeispiel:  
Начин на заявяване:

Hexagon die nuts 7111UNC1/4x20 HSS  
Sechskant Schneidmuttern 7111UNC1/4x20 HSS  
Плашки шестостенни 7111UNC1/4x20 HSS

### Circular Dies

for American Unified Fine thread  
according to ANSI B1.1

**Form B** - closed

### Runde Schneideisen

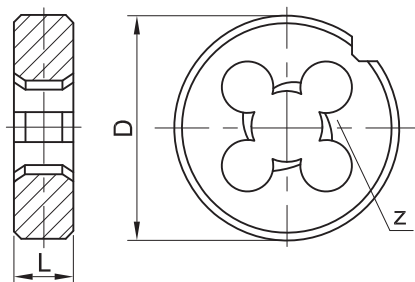
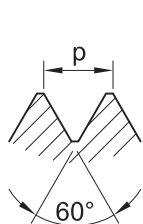
für amerikanisches unifiziertes  
Feingewinde nach ANSI B1.1

**Form B** - geschlossen

### Плашки кръгли

за американска унифицирана  
резба ситна стъпка по ANSI B1.1

**Форма В** - затворени



## UNF DIN EN 22 568 (DIN 223)

Thread Gewinde Резба	p / inch	D mm	L mm	z	Art. No. 6211*..
UNF Nr.4	48	20	5	3	6211UNFNr.4x48
UNF Nr.5	44	20	5	3	6211UNFNr.5x44
UNF Nr.6	40	20	5	3	6211UNFNr.6x40
UNF Nr.8	36	20	7	3	6211UNFNr.8x36
UNF Nr.10	32	20	7	3	6211UNFNr.10x32
UNF Nr.12	28	20	7	4	6211UNFNr.12x28
UNF 1/4	28	20	7	4	6211UNF1/4x28
UNF 5/16	24	25	9	4	6211UNF5/16x24
UNF 3/8	24	30	11	4	6211UNF3/8x24
UNF 7/16	20	30	11	4	6211UNF7/16x20
UNF 1/2	20	38	10	5	6211UNF1/2x20
UNF 9/16	18	38	10	5	6211UNF9/16x18
UNF 5/8	18	45	14	5	6211UNF5/8x18
UNF 3/4	16	45	14	5	6211UNF3/4x16
UNF 7/8	14	55	16	6	6211UNF7/8x14
UNF 1"	12	55	16	6	6211UNF1"x12
UNF 1"	14	55	16	6	6211UNF1"x14
UNF 1"1/8	12	65	18	6	6211UNF1"1/8x12
UNF 1"1/4	12	65	18	6	6211UNF1"1/4x12
UNF 1"3/8	12	65	18	7	6211UNF1"3/8x12
UNF 1"1/2	12	65	18	8	6211UNF1"1/2x12
UNF 1"1/2	12	75	20	8	6211UNF1"1/2x12-1

Ordering example:

Bestellbeispiel:

Начин на заявяване:

Circular dies 6211UNFNr.4x48 HSS

Runde Schneideisen 6211UNFNr.4x48 HSS

Плашки кръгли 6211UNFNr.4x48 HSS

M

Mf

UNC

UNF

UNEF

BSW

BSF

G

PS

BSPT

NPS

NPT

NPTF

PT

PG

BA

## Circular Dies

for American Unified Fine thread  
according to ANSI B1.1

Form A - cut

## Runde Schneideisen

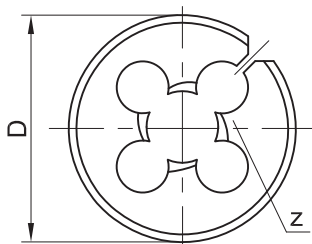
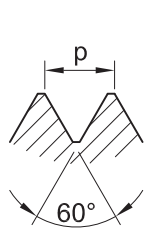
für amerikanisches unifiziertes  
Feingewinde nach ANSI B1.1

Form A - geschlitzt

## Плашки кръгли

за американска унифицирана  
резба ситна стъпка по ANSI B1.1

Форма А - прорязани



# UNF BS 1127

	Thread Gewinde Резба	p / inch	D		L		z	Art. No. 6513*..
			inch	mm	inch	mm		
	UNF Nr.4	48	13/16	20.6	1/4	6.35	3	6513Nr.4x48
	UNF Nr.5	44	13/16	20.6	1/4	6.35	3	6513Nr.5x44
	UNF Nr.6	40	13/16	20.6	1/4	6.35	3	6513Nr.6x40
	UNF Nr.8	36	13/16	20.6	1/4	6.35	3	6513Nr.8x36
	UNF Nr.10	32	13/16	20.6	1/4	6.35	3	6513Nr.10x32
	UNF Nr.12	28	13/16	20.6	1/4	6.35	4	6513Nr.12x28
	UNF 1/4	28	13/16	20.6	1/4	6.35	4	6513UNF1/4x28
	UNF 1/4	28	1"	25.4	3/8	9.5	4	6513UNF1/4x28-1
	UNF 5/16	24	1"	25.4	3/8	9.5	4	6513UNF5/16x24
	UNF 3/8	24	1"	25.4	3/8	9.5	4	6513UNF3/8x24
	UNF 1/4	28	1" 5/16	33.4	7/16	11.1	4	6513UNF1/4x28-2
	UNF 5/16	24	1" 5/16	33.4	7/16	11.1	4	6513UNF5/16x24-1
	UNF 3/8	24	1" 5/16	33.4	7/16	11.1	4	6513UNF3/8x24-1
	UNF 7/16	20	1" 5/16	33.4	7/16	11.1	4	6513UNF7/16x20
	UNF 1/2	20	1" 5/16	33.4	7/16	11.1	5	6513UNF1/2x20
	UNF 9/16	18	1" 5/16	33.4	7/16	11.1	5	6513UNF9/16x18
	UNF 3/8	24	1" 1/2	38.1	1/2	12.7	4	6513UNF3/8x24-2
	UNF 7/16	20	1" 1/2	38.1	1/2	12.7	4	6513UNF7/16x20-1
	UNF 1/2	20	1" 1/2	38.1	1/2	12.7	5	6513UNF1/2x20-1
	UNF 9/16	18	1" 1/2	38.1	1/2	12.7	4	6513UNF9/16x18-1
	UNF 5/8	18	1" 1/2	38.1	1/2	12.7	5	6513UNF5/8x18
	UNF 3/4	16	1" 1/2	38.1	1/2	12.7	5	6513UNF3/4x16
	UNF 5/8	18	2"	50.8	5/8	15.9	4	6513UNF5/8x18-1
	UNF 3/4	16	2"	50.8	5/8	15.9	6	6513UNF3/4x16-1
	UNF 7/8	14	2"	50.8	5/8	15.9	6	6513UNF7/8x14
	UNF 1"	12	2"	50.8	5/8	15.9	6	6513UNF1"x12
	UNF 1"1/8	12	3"	76.2	7/8	22.2	6	6513UNF1"1/8x12
	UNF 1"1/4	12	3"	76.2	7/8	22.2	6	6513UNF1"1/4x12
	UNF 1"3/8	12	3"	76.2	7/8	22.2	7	6513UNF1"3/8x12
	UNF 1"1/2	12	3"	76.2	7/8	22.2	8	6513UNF1"1/2x12

Ordering example:

Bestellbeispiel:

Начин на заявяване:

Circular dies 6513Nr.4x48 HSS

Runde Schneideisen 6513Nr.4x48 HSS

Плашки кръгли 6513Nr.4x48 HSS

## Hexagon Die Nuts

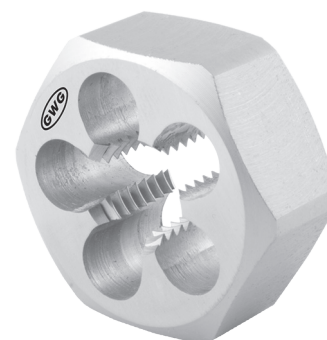
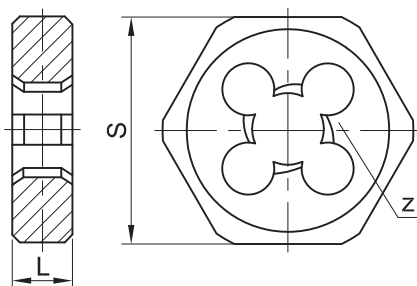
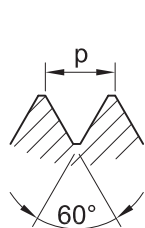
for American Unified Fine thread  
according to ANSI B1.1

## Sechskant-Schneidmuttern

für amerikanisches unifiziertes  
Feingewinde nach ANSI B1.1

## Плашки шестостенни

за американска унифицирана  
резба ситна стъпка по ANSI B1.1



M

Mf

UNC

UNF

UNEF

BSW

BSF

G

PS

BSPT

NPS

NPT

NPTF

PT

PG

BA

# UNF DIN 382

Thread Gewinde Резба	p / inch	S mm	L mm	z	Art. No. 7211*..
UNF 1/4	28	19	7	4	7211UNF1/4x28
UNF 5/16	24	22	9	4	7211UNF5/16x24
UNF 3/8	24	27	11	4	7211UNF3/8x24
UNF 7/16	20	27	11	4	7211UNF7/16x20
UNF 1/2	20	36	10	5	7211UNF1/2x20
UNF 9/16	18	36	10	5	7211UNF9/16x18
UNF 5/8	18	41	14	5	7211UNF5/8x18
UNF 3/4	16	41	14	5	7211UNF3/4x16
UNF 7/8	14	50	16	6	7211UNF7/8x14
UNF 1"	12	50	16	6	7211UNF1"x12
UNF 1"1/8	12	60	18	6	7211UNF1"1/8x12
UNF 1"1/4	12	60	18	6	7211UNF1"1/4x12
UNF 1"3/8	12	60	18	7	7211UNF1"3/8x12
UNF 1"1/2	12	70	20	7	7211UNF1"1/2x12

Ordering example:

Bestellbeispiel:

Начин на заявяване:

Hexagon die nuts 7211UNF1/4x20 HSS

Sechskant Schneidmuttern 7211UNF1/4x20 HSS

Плашки шестостенни 7211UNF1/4x20 HSS

### Circular Dies

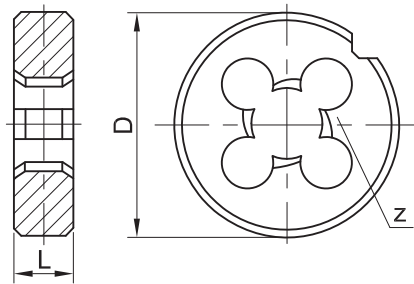
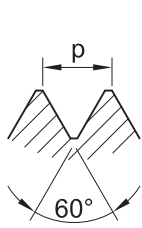
for American Unified Extra Fine thread according to ANSI B1.1  
**Form B - closed**

### Runde Schneideisen

für amerikanisches unifiziertes Extra-Feingewinde nach ANSI B1.1  
**Form B - geschlossen**

### Плашки кръгли

за американска унифицирана резба ситна стъпка по ANSI B1.1  
**Форма В - затворени**



## UNEF DIN EN 22 568 (DIN 223)

Thread Gewinde Резба	p / inch	D mm	L mm	z	Art. No. 6911*..
UNEF Nr.12	32	20	7	4	6911UNEFNr.12x32
UNEF 1/4	32	20	7	4	6911UNEF1/4x32
UNEF 5/16	32	25	9	4	6911UNEF5/16x32
UNEF 3/8	32	30	11	4	6911UNEF3/8x32
UNEF 7/16	28	30	11	4	6911UNEF7/16x28
UNEF 1/2	28	38	10	5	6911UNEF1/2x28
UNEF 9/16	24	38	10	5	6911UNEF9/16x24
UNEF 5/8	24	45	14	5	6911UNEF5/8x24
UNEF 11/16	24	45	14	5	6911UNEF11/16x24
UNEF 3/4	20	45	14	5	6911UNEF3/4x20
UNEF 13/16	20	55	16	5	6911UNEF13/16x20
UNEF 7/8	20	55	16	6	6911UNEF7/8x20
UNEF 15/16	20	55	16	6	6911UNEF15/16x20
UNEF 1"	20	55	16	6	6911UNEF1"x20
UNEF 1"1/16	18	65	18	6	6911UNEF1"1/16x18
UNEF 1"1/8	18	65	18	6	6911UNEF1"1/8x18
UNEF 1"3/16	18	65	18	6	6911UNEF1"3/16x18
UNEF 1"1/4	18	65	18	6	6911UNEF1"1/4x18
UNEF 1"5/16	18	65	18	7	6911UNEF1"5/16x18
UNEF 1"3/8	18	65	18	7	6911UNEF1"3/8x18
UNEF 1"7/16	18	75	20	7	6911UNEF1"7/16x18
UNEF 1"1/2	18	75	20	8	6911UNEF1"1/2x18

Ordering example:  
 Bestellbeispiel:  
 Начин на заявяване:

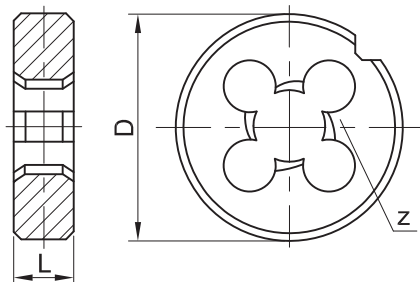
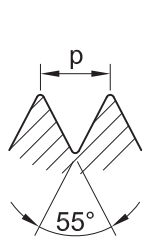
Circular dies 6911UNEFNr.12x32 HSS  
 Runde Schneideisen 6911UNEFNr.12x32 HSS  
 Плашки кръгли 6911UNEFNr.12x32 HSS



**Circular Dies**  
for Whitworth thread  
according to BS 84

**Runde Schneideisen**  
für Whitworth-Gewinde  
nach BS 84

**Плашки кръгли**  
за Витвортова резба  
по BS 84



M

Mf

UNC

UNF

UNEF

BSW

BSF

G

PS

BSPT

NPS

NPT

NPTF

PT

PG

BA

## BSW DIN EN 22 568 (DIN 223)

Thread Gewinde Резба	p / inch	D mm	L mm	z	Art. No. 6121*..
BSW 1/8	40	20	5	3	6121BSW1/8x40
BSW 5/32	32	20	5	3	6121BSW5/32x32
BSW 3/16	24	20	7	3	6121BSW3/16x24
BSW 7/32	24	20	7	4	6121BSW7/32x24
BSW 1/4	20	20	7	4	6121BSW1/4x20
BSW 5/16	18	25	9	4	6121BSW5/16x18
BSW 3/8	16	30	11	4	6121BSW3/8x16
BSW 7/16	14	30	11	4	6121BSW7/16x14
BSW 1/2	12	38	14	4	6121BSW1/2x12
BSW 9/16	12	38	14	4	6121BSW9/16x12
BSW 5/8	11	45	18	4	6121BSW5/8x11
BSW 3/4	10	45	18	5	6121BSW3/4x10
BSW 7/8	9	55	22	5	6121BSW7/8x9
BSW 1"	8	55	22	5	6121BSW1"x8
BSW 1"1/8	7	65	25	6	6121BSW1"1/8x7
BSW 1"1/4	7	65	25	7	6121BSW1"1/4x7
BSW 1"3/8	6	65	25	7	6121BSW1"3/8x6
BSW 1"1/2	6	65	25	7	6121BSW1"1/2x6-1
BSW 1"1/2	6	75	30	7	6121BSW1"1/2x6
BSW 1"5/8	5	75	30	7	6121BSW1"5/8x5
BSW 1"3/4	5	90	36	7	6121BSW1"3/4x5
BSW 1"7/8	4.5	90	36	7	6121BSW1"7/8x4.5
BSW 2"	4.5	90	36	8	6121BSW2"x4.5

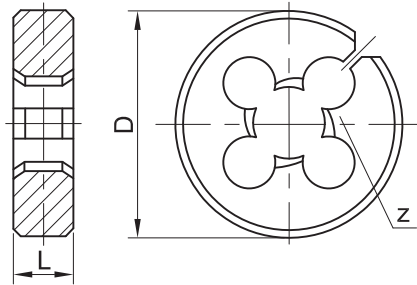
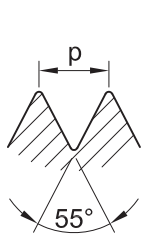
Ordering example: Circular dies 6121BSW1/8x40 HSS  
 Bestellbeispiel: Runde Schneideisen 6121BSW1/8x40 HSS  
 Начин на заявяване: Плашки кръгли 6121BSW1/8x40 HSS



**Circular Dies**  
for Whitworth thread  
according to BS 84  
**Form A - cut**

**Runde Schneideisen**  
für Whitworth-Gewinde  
nach BS 84  
**Form A - geschlitzt**

**Плашки кръгли**  
за Витвортова резба  
по BS 84  
**Форма А - прорязани**



## BSW BS 1127

	Thread Gewinde Резба	p / inch	D		L		Z	Art. No. 6423*..
			inch	mm	inch	mm		
	BSW 3/32	48	13/16	20.6	1/4	6.35	3	6423BSW3/32x48
	BSW 1/8	40	13/16	20.6	1/4	6.35	3	6423BSW1/8x40
<b>G</b>	BSW 5/32	32	13/16	20.6	1/4	6.35	3	6423BSW5/32x32
	BSW 3/16	24	13/16	20.6	1/4	6.35	3	6423BSW3/16x24
	BSW 1/4	20	13/16	20.6	1/4	6.35	4	6423BSW1/4x20
<b>PS</b>	BSW 1/4	20	1"	25.4	3/8	9.5	4	6423BSW1/4x20-1
	BSW 5/16	18	1"	25.4	3/8	9.5	4	6423BSW5/16x18
	BSW 3/8	16	1"	25.4	3/8	9.5	4	6423BSW3/8x16
<b>BSPT</b>	BSW 3/8	16	1" 5/16	33.4	7/16	11.1	4	6423BSW3/8x16-1
	BSW 7/16	14	1" 5/16	33.4	7/16	11.1	4	6423BSW7/16x14
	BSW 1/2	12	1" 5/16	33.4	7/16	11.1	4	6423BSW1/2x12
<b>NPS</b>	BSW 3/8	16	1" 1/2	38.1	1/2	12.7	4	6423BSW3/8x16-2
	BSW 7/16	14	1" 1/2	38.1	1/2	12.7	4	6423BSW7/16x14-1
	BSW 1/2	12	1" 1/2	38.1	1/2	12.7	4	6423BSW1/2x12-1
<b>NPT</b>	BSW 9/16	12	1" 1/2	38.1	1/2	12.7	4	6423BSW9/16x12
	BSW 5/8	11	1" 1/2	38.1	1/2	12.7	4	6423BSW5/8x11
	BSW 3/4	10	1" 1/2	38.1	1/2	12.7	5	6423BSW3/4x10
<b>NPTF</b>	BSW 5/8	11	2"	50.8	5/8	15.9	4	6423BSW5/8x11-1
	BSW 3/4	10	2"	50.8	5/8	15.9	5	6423BSW3/4x10-1
	BSW 7/8	9	2"	50.8	5/8	15.9	5	6423BSW7/8x9
<b>PT</b>	BSW 1"	8	2"	50.8	5/8	15.9	5	6423BSW1"x8

Ordering example: Circular dies 6423BSW3/32x48 HSS  
Bestellbeispiel: Runde Schneideisen 6423BSW3/32x48 HSS  
Начин на заявяване: Плашки кръгли 6423BSW3/32x48 HSS

## Hexagon Die Nuts

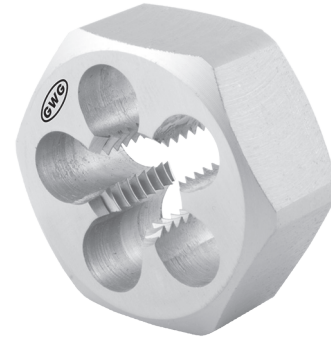
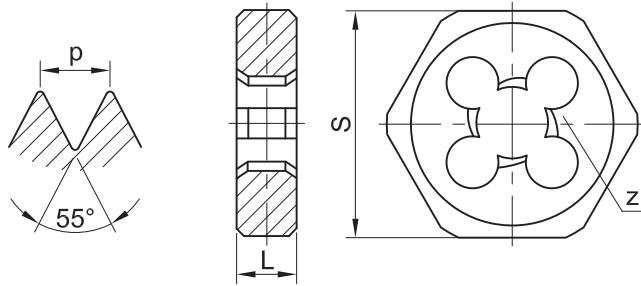
for Whitworth thread  
according to BS 84

## Sechskant-Schneidmuttern

für Whitworth-Gewinde  
nach BS 84

## Плашки шестостенни

за Витвортова резба  
по BS 84



M

Mf

UNC

UNF

UNEF

BSW

BSF

G

PS

BSPT

NPS

NPT

NPTF

PT

PG

BA

# BSW DIN 382

Thread Gewinde Резба	p / inch	S mm	L mm	z	Art. No. 7121*..
BSW 1/8	40	19	5	3	7121BSW1/8x40
BSW 3/16	24	19	7	3	7121BSW3/16x24
BSW 1/4	20	19	7	4	7121BSW1/4x20
BSW 5/16	18	22	9	4	7121BSW5/16x18
BSW 3/8	16	27	11	4	7121BSW3/8x16
BSW 7/16	14	27	11	5	7121BSW7/16x14
BSW 1/2	12	36	14	4	7121BSW1/2x12
BSW 9/16	12	36	14	4	7121BSW9/16x12
BSW 5/8	11	41	18	4	7121BSW5/8x11
BSW 3/4	10	41	18	5	7121BSW3/4x10
BSW 7/8	9	50	22	5	7121BSW7/8x9
BSW 1"	8	50	22	5	7121BSW1"x8
BSW 1"1/8	7	60	25	6	7121BSW1"1/8x7
BSW 1"1/4	7	60	25	7	7121BSW1"1/4x7
BSW 1"3/8	6	60	25	7	7121BSW1"3/8x6
BSW 1"1/2	6	70	30	7	7121BSW1"1/2x6-1
BSW 1"5/8	5	70	30	7	7121BSW1"5/8x5
BSW 1"3/4	5	85	36	7	7121BSW1"3/4x5
BSW 2"	4.5	85	36	7	7121BSW2"x4.5

Ordering example:

Bestellbeispiel:

Начин на заявяване:

Hexagon die nuts 7121BSW1/8x40 HSS

Sechskant Schneidmuttern 7121BSW1/8x40 HSS

Плашки шестостенни 7121BSW1/8x40 HSS

**Circular Dies**  
for Whitworth thread  
according to BS 84

**Runde Schneideisen**  
für Whitworth-Gewinde  
nach BS 84

**Плашки кръгли**  
за Витвортова резба  
по BS 84

M

Mf

UNC

UNF

UNEF

BSW

BSF

G

PS

BSPT

NPS

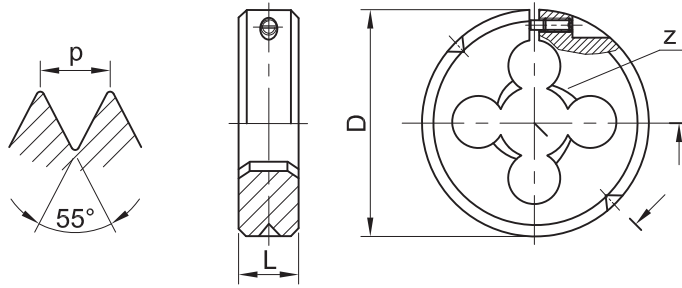
NPT

NPTF

PT

PG

BA



## BSW JIS B 4451

	Thread Gewinde Резба	p / inch	D mm	L mm	z	Art. No. 6723*..
BSF	BSW 1/8	40	25	9	3	6723BSW1/8x40
	BSW 5/32	32	25	9	3	6723BSW5/32x32
	BSW 3/16	24	25	9	3	6723BSW3/16x24
G	BSW 1/4	20	25	9	4	6723BSW1/4x20
	BSW 5/16	18	25	9	4	6723BSW5/16x18
	BSW 3/8	16	25	9	5	6723BSW3/8x16
PS	BSW 1/8	40	38	13	3	6723BSW1/8x40-1
	BSW 5/32	32	38	13	3	6723BSW5/32x32-1
	BSW 3/16	24	38	13	3	6723BSW3/16x24-1
	BSW 1/4	20	38	13	4	6723BSW1/4x20-1
	BSW 5/16	18	38	13	4	6723BSW5/16x18-1
BSPT	BSW 3/8	16	38	13	4	6723BSW3/8x16-1
	BSW 7/16	14	38	13	4	6723BSW7/16x14
	BSW 1/2	12	38	13	4	6723BSW1/2x12
NPS	BSW 1/4	20	50	16	4	6723BSW1/4x20-2
	BSW 5/16	18	50	16	4	6723BSW5/16x18-2
	BSW 3/8	16	50	16	4	6723BSW3/8x16-2
NPT	BSW 7/16	14	50	16	4	6723BSW7/16x14-1
	BSW 1/2	12	50	16	4	6723BSW1/2x12-1
	BSW 9/16	12	50	16	5	6723BSW9/16x12
NPTF	BSW 5/8	11	50	16	5	6723BSW5/8x11
	BSW 3/4	10	50	16	5	6723BSW3/4x10
	BSW 7/8	9	50	16	6	6723BSW7/8x9
	BSW 1"	8	50	16	6	6723BSW1"x8
PT	BSW 7/8	9	63	20	6	6723BSW7/8x9-1
	BSW 1"	8	63	20	6	6723BSW1"x8

Ordering example: Circular dies 6723BSW1/8x40 HSS  
 Bestellbeispiel: Runde Schneideisen 6723BSW1/8x40 HSS  
 Начин на заявяване: Плашки кръгли 6723BSW1/8x40 HSS

### Circular Dies

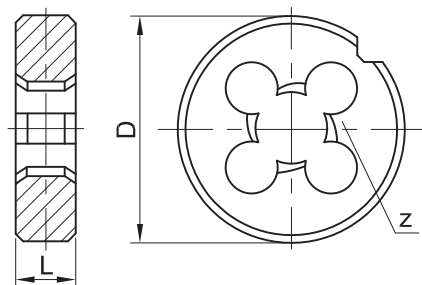
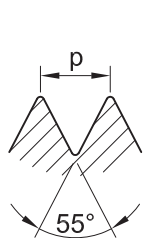
for Whitworth Fine thread  
according to BS 84  
Form B - closed

### Runde Schneideisen

für Whitworth-Feingewinde  
nach BS 84  
Form B - geschlossen

### Плашки кръгли

за Витвортова резба  
ситна стъпка по BS 84  
Форма В - затворени



## BSF DIN EN 22 568 (DIN 223)

Thread Gewinde Резба	p / inch	D mm	L mm	z	Art. No. 6221*..
BSF 3/16	32	20	7	3	6221BSF3/16x32
BSF 1/4	26	20	7	4	6221BSF1/4x26
BSF 5/16	22	25	9	4	6221BSF5/16x22
BSF 3/8	20	30	11	4	6221BSF3/8x20
BSF 7/16	18	30	11	4	6221BSF7/16x18
BSF 1/2	16	38	10	5	6121BSW1/2x16
BSF 9/16	16	38	10	5	6221BSF9/16x16
BSF 5/8	14	45	14	5	6221BSF5/8x14
BSF 3/4	12	45	14	5	6221BSF3/4x12
BSF 7/8	11	55	22	5	6221BSF7/8x11
BSF 1"	10	55	22	6	6221BSF1"x10

Ordering example:  
Bestellbeispiel:  
Начин на заявяване:

Circular dies 6221BSF3/16x32 HSS  
Runde Schneideisen 6221BSF3/16x32 HSS  
Плашки кръгли 6221BSF3/16x32 HSS

M  
Mf  
UNC  
UNF  
UNEF  
BSW  
BSF  
G  
PS  
BSPT  
NPS  
NPT  
NPTF  
PT  
PG  
BA



## Circular Dies

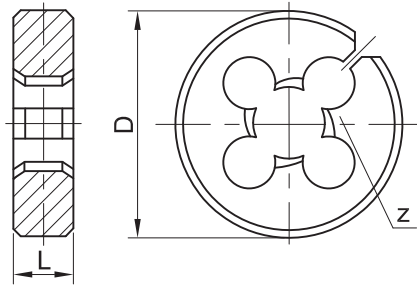
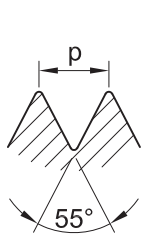
for Whitworth Fine thread  
according to BS 84  
Form A - cut

## Runde Schneideisen

für Whitworth-Feingewinde  
nach BS 84  
Form A - geschlitzt

## Плашки кръгли

за Витвортова резба  
ситна стъпка по BS 84  
Форма А - прорязани



**BSF BS 1127**

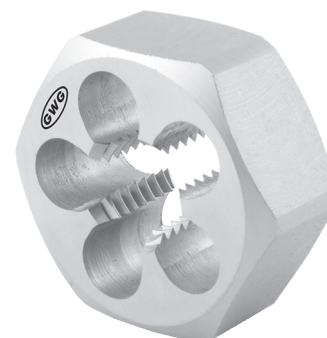
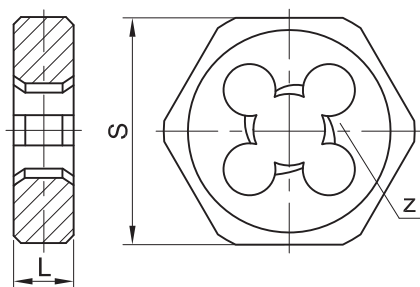
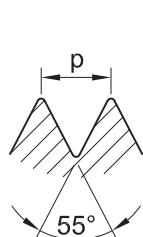
	Thread Gewinde Резба	p / inch	D		L		Z	Art. No. 6523*..
			inch	mm	inch	mm		
BSF	BSF 3/16	32	13/16	20.6	1/4	6.35	3	6523BSF3/16x32
	BSF 1/4	26	13/16	20.6	1/4	6.35	4	6523BSF1/4x26
G	BSF 1/4	26	1"	25.4	3/8	9.5	4	6523BSF1/4x26-1
	BSF 5/16	22	1"	25.4	3/8	9.5	4	6523BSF5/16x22
PS	BSF 3/8	20	1"	25.4	3/8	9.5	4	6523BSF3/8x20
	BSF 3/8	20	1" 5/16	33.4	7/16	11.1	4	6523BSF3/8x20-1
	BSF 7/16	18	1" 5/16	33.4	7/16	11.1	4	6523BSF7/16x18
BSPT	BSF 1/2	16	1" 5/16	33.4	7/16	11.1	5	6523BSF1/2x16
	BSF 3/8	20	1" 1/2	38.1	1/2	12.7	4	6523BSF3/8x20-2
	BSF 7/16	18	1" 1/2	38.1	1/2	12.7	4	6523BSF7/16x18-1
NPS	BSF 1/2	16	1" 1/2	38.1	1/2	12.7	5	6523BSF1/2x16-1
	BSF 9/16	16	1" 1/2	38.1	1/2	12.7	4	6523BSF9/16x16
	BSF 5/8	14	1" 1/2	38.1	1/2	12.7	5	6523BSF5/8x14
	BSF 3/4	12	1" 1/2	38.1	1/2	12.7	6	6523BSF3/4x12
NPT	BSF 5/8	14	2"	50.8	5/8	15.9	5	6523BSF5/8x14-1
	BSF 3/4	12	2"	50.8	5/8	15.9	6	6523BSF3/4x12-1
NPTF	BSF 7/8	11	2"	50.8	5/8	15.9	5	6523BSF7/8x11

Ordering example: Circular dies 6523BSF3/16x32 HSS  
Bestellbeispiel: Runde Schneideisen 6523BSF3/16x32 HSS  
Начин на заявяване: Плашки кръгли 6523BSF3/16x32 HSS

**Hexagon Die Nuts**  
for Whitworth Fine thread  
according to BS 84

**Sechskant-Schneidmuttern**  
für Whitworth-Feingewinde  
nach BS 84

**Плашки шестостенни**  
за Витвортова резба  
ситна стъпка по BS 84



M

Mf

UNC

UNF

UNEF

BSW

**BSF DIN 382**

Thread Gewinde Резба	p / inch	S mm	L mm	Z	Art. No. 7221*..
BSF 1/4	26	19	7	4	7221BSF1/4x26
BSF 5/16	22	22	9	4	7221BSF5/16x22
BSF 3/8	20	27	11	4	7221BSF3/8x20
BSF 7/16	18	27	11	4	7221BSF7/16x18
BSF 1/2	16	36	10	5	7221BSF1/2x16
BSF 9/16	16	36	10	5	7221BSF9/16x16
BSF 5/8	14	41	14	5	7221BSF5/8x14
BSF 3/4	12	41	14	5	7221BSF3/4x12
BSF 7/8	11	50	16	5	7221BSF7/8x11
BSF 1"	10	50	16	6	7221BSF1"x10

BSF

G

PS

BSPT

NPS

NPT

NPTF

PT

PG

BA

Ordering example:  
Bestellbeispiel:  
Начин на заявяване:

Hexagon die nuts 7221BSF1/4x26 HSS  
Sechskant Schneidmuttern 7221BSF1/4x26 HSS  
Плашки шестостенни 7221BSF1/4x26 HSS

### Circular Dies

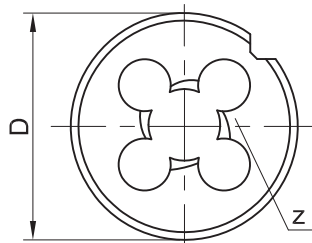
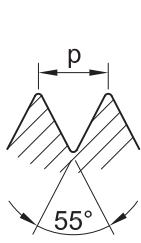
for Whitworth Pipe thread  
according to DIN ISO 228  
**Form B - closed**

### Runde Schneideisen

für Whitworth-Rohrgewinde  
nach DIN ISO 228  
**Form B - geschlossen**

### Плашки кръгли

за тръбна цилиндрична резба  
по DIN ISO 228  
**Форма В - затворени**



## G (BSPF) DIN EN 24 231 (DIN 5158)

	Thread Gewinde Резба	p / inch	D mm	L mm	z	Art. No. 6131*..
	G 1/8	28	30	11	4	6131G1/8x28
	G 1/4	19	38	10	4	6131G1/4x19
	G 3/8	19	45	14	5	6131G3/8x19
	G 1/2	14	45	14	5	6131G1/2x14
	G 5/8	14	55	16	5	6131G5/8x14
	G 3/4	14	55	16	6	6131G3/4x14
	G 7/8	14	65	18	6	6131G7/8x14
	G 1"	11	65	18	6	6131G1"x11
	G 1"1/8	11	75	20	7	6131G1"1/8x11
	G 1"1/4	11	75	20	7	6131G1"1/4x11
	G 1"3/8	11	90	22	7	6131G1"3/8x11
	G 1"1/2	11	90	22	7	6131G1"1/2x11
	G 1"5/8	11	90	22	7	6131G1"5/8x11
	G 1"3/4	11	105	22	7	6131G1"3/4x11
	G 2"	11	90	22	10	6131G2"x11
	G 2"	11	105	22	9	6131G2"x11-1
	G 2"1/4	11	120	22	10	6131G2"1/4x11
	G 2"1/2	11	120	22	10	6131G2"1/2x11
	G 2"3/4	11	120	22	12	6131G2"3/4x11
	G 3"	11	130	25	10	6131G3"x11
	G 3"1/2	11	150	25	12	6131G3"1/2x11
	G 4"	11	160	25	13	6131G4"x11

Ordering example: Circular dies 6131G1/8x28 HSS  
Bestellbeispiel: Runde Schneideisen 6131G1/8x28 HSS  
Начин на заявяване: Плашки кръгли 6131G1/8x28 HSS



## Circular Dies

for Whitworth Pipe thread  
according to DIN ISO 228

Form A - cut

## Runde Schneideisen

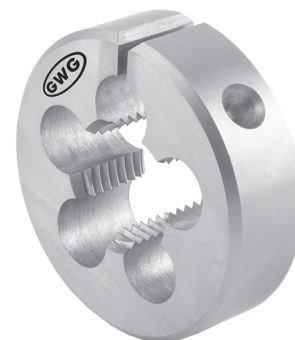
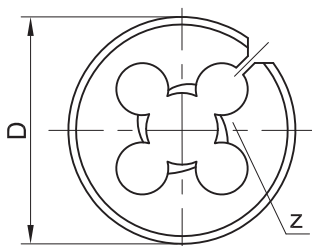
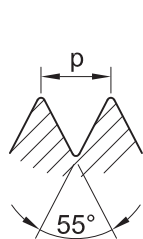
für Whitworth-Rohrgewinde  
nach DIN ISO 228

Form A - geschlitzt

## Плашки кръгли

за тръбна цилиндрична резба  
по DIN ISO 228

Форма А - прорязани



M

Mf

UNC

UNF

UNEF

BSW

# G (BSPF) BS 1127

Thread Gewinde Резба	p / inch	D		L		z	Art. No. 6433*..
		inch	mm	inch	mm		
G 1/8	28	1"	25.4	3/8	9.5	5	6433G1/8x28
G 1/8	28	1" 5/16	33.4	7/16	11.1	4	6433G1/8x28-1
G 1/4	19	1" 5/16	33.4	7/16	11.1	5	6433G1/4x19
G 1/8	28	1" 1/2	38.1	1/2	12.7	4	6433G1/8x28-2
G 1/4	19	1" 1/2	38.1	1/2	12.7	4	6433G1/4x19-1
G 3/8	19	1" 1/2	38.1	1/2	12.7	5	6433G3/8x19
G 1/2	14	1" 1/2	38.1	1/2	12.7	7	6433G1/2x14
G 1/4	19	2"	50.8	5/8	15.9	4	6433G1/4x19-2
G 3/8	19	2"	50.8	5/8	15.9	5	6433G3/8x19-1
G 1/2	14	2"	50.8	5/8	15.9	5	6433G1/2x14-1
G 5/8	14	2"	50.8	5/8	15.9	5	6433G5/8x14
G 3/4	14	2"	50.8	5/8	15.9	6	6433G3/4x14
G 1"	11	3"	76.2	7/8	22.2	6	6433G1"x11
G 1"1/4	11	3"	76.2	7/8	22.2	7	6433G1"1/4x11
G 1"1/2	11	4"	101.6	1"	25.4	7	6433G1"1/2x11
G 2"	11	4"	101.6	1"	25.4	9	6433G2"x11

BSF

G

PS

BSPT

NPS

NPT

NPTF

PT

PG

BA

Ordering example:

Circular dies 6433G1/8x28 HSS

Bestellbeispiel:

Runde Schneideisen 6433G1/8x28 HSS

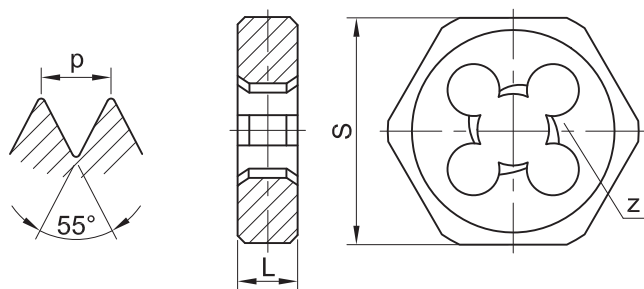
Начин на заявяване:

Плашки кръгли 6433G1/8x28 HSS

**Hexagon Die Nuts**  
for Whitworth Pipe thread  
according to DIN ISO 228

**Sechskant-Schneidmuttern**  
für Whitworth-Rohrgewinde  
nach DIN ISO 228

**Плашки шестостенни**  
за тръбна цилиндрична резба  
по DIN ISO 228



## G (BSPF) DIN 382

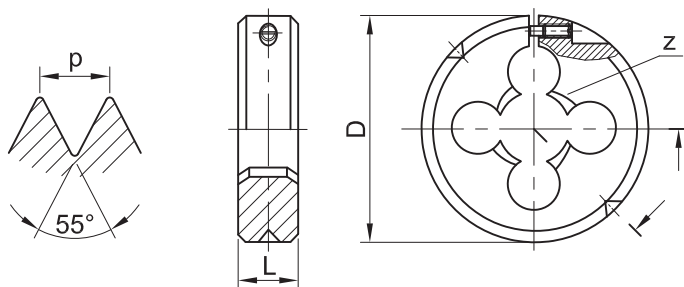
	Thread Gewinde Резба	p / inch	S mm	L mm	z	Art. No. 7131*..
	G 1/8	28	27	11	4	7131G1/8x28
	G 1/4	19	36	10	4	7131G1/4x19
	G 3/8	19	41	14	5	7131G3/8x19
	G 1/2	14	41	14	5	7131G1/2x14
	G 5/8	14	50	16	5	7131G5/8x14
	G 3/4	14	50	16	6	7131G3/4x14
	G 7/8	14	60	18	6	7131G7/8x14
	G 1"	11	60	18	6	7131G1"x11
	G 1"1/8	11	70	20	7	7131G1"1/8x11
	G 1"1/4	11	70	20	7	7131G1"1/4x11
	G 1"3/8	11	85	22	7	7131G1"3/8x11
	G 1"1/2	11	85	22	7	7131G1"1/2x11
	G 1"5/8	11	85	22	7	7131G1"5/8x11
	G 1"3/4	11	100	22	7	7131G1"3/4x11
	G 2"	11	100	22	9	7131G2"x11
	G 2"1/4	11	115	22	10	7131G2"1/4x11
	G 2"1/2	11	115	22	10	7131G2"1/2x11

Ordering example: Hexagon die nuts 7131G1/8x28 HSS  
 Bestellbeispiel: Sechskant Schneidmuttern 7131G1/8x28 HSS  
 Начин на заявяване: Плашки шестостенни 7131G1/8x28 HSS

**Circular Dies**  
for Whitworth Pipe thread  
according to DIN ISO 228

**Runde Schneideisen**  
für Whitworth-Rohrgewinde  
nach DIN ISO 228

**Плашки кръгли**  
за тръбна цилиндрична резба  
по DIN ISO 228



## PF (G) JIS B 4451

Thread Gewinde Резба	p / inch	D mm	L mm	z	Art. No. 6733*..
PF 1/8	28	38	13	4	6733PF1/8x28
PF 1/4	19	38	13	5	6733PF1/4x19
PF 3/8	19	38	13	5	6733PF3/8x19
PF 1/8	28	50	16	4	6733PF1/8x28-1
PF 1/4	19	50	16	5	6733PF1/4x19-1
PF 3/8	19	50	16	5	6733PF3/8x19-1
PF 1/2	14	50	16	5	6733PF1/2x14
PF 3/4	14	50	16	6	6733PF3/4x14
PF 1"	11	50	16	10	6733PF1"x11
PF 3/4	14	63	20	6	6733PF3/4x14-1
PF 1"	11	63	20	6	6733PF1"x11-1
PF 1"1/4	11	63	20	10	6733PF1"1/4x11

Ordering example: Circular dies 6733PF1/8x28 HSS  
Bestellbeispiel: Runde Schneideisen 6733PF1/8x28 HSS  
Начин на заявяване: Плашки кръгли 6733PF1/8x28 HSS

M  
Mf  
UNC  
UNF  
UNEF  
BSW  
BSF  
G  
PS  
BSPT  
NPS  
NPT  
NPTF  
PT  
PG  
BA

**Circular Dies**  
for Parallel Pipe thread  
according to JIS B 0203

**Runde Schneideisen**  
für paralleles Rohrgewinde  
nach JIS B 0203

**Плашки кръгли**  
за тръбна цилиндрична резба  
по JIS B 0203

M

Mf

UNC

UNF

UNEF

BSW

BSF

G

PS

BSPT

NPS

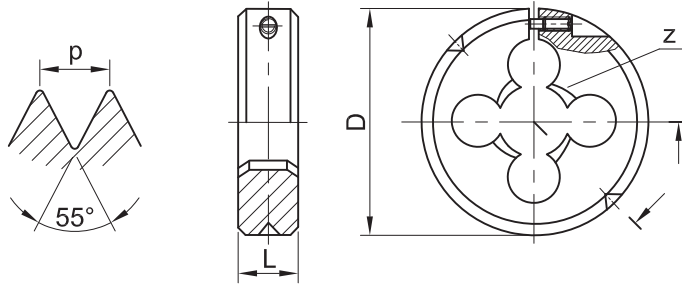
NPT

NPTF

PT

PG

BA



**PS (Rp) JIS B 4451**

Thread Gewinde Резба	p / inch	D mm	L mm	z	Art. No. 6743*..
PS 1/8	28	38	11	4	67431PS1/8x28
PS 1/4	19	38	16	5	67431PS1/4x19
PS 3/8	19	38	18	7	67431PS3/8x19
PS 1/8	28	50	11	4	67431PS1/8x28-1
PS 1/4	19	50	16	5	67431PS1/4x19-1
PS 3/8	19	50	18	5	67431PS3/8x19-1
PS 1/2	14	50	22	6	67431PS1/2x14
PS 3/4	14	50	24	8	67431PS3/4x14
PS 1"	11	50	28	10	67431PS1"x11
PS 1"1/4	11	63	31.75	10	67431PS1"1/4x11

Ordering example: Circular dies 6743PS1/8x28 HSS  
Bestellbeispiel: Runde Schneideisen 6743PS1/8x28 HSS  
Начин на заявяване: Плашки кръгли 6743PS1/8x28 HSS

## Circular Dies

for Tapered Withworth

Pipe thread according to BS 21

Tapet 1:16

**Form B** - closed

## Runde Schneideisen

für Whithworth kegeliges

Rohrgewinde nach BS 21

Kegel 1:16

**Form B** - geschlossen

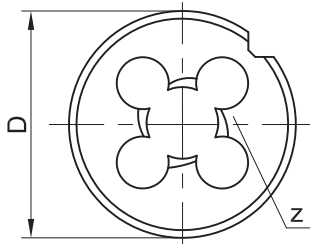
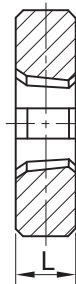
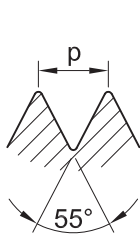
## Плашки кръгли

за Витвортова тръбна

конусна резба по BS 21

Конус 1:16

**Форма В** - затворени



# BSPT BS 1127

Thread Gewinde Резба	p / inch	D		L		z	Art. No. 6443*..
		inch	mm	inch	mm		
BSPT 1/8	28	1"	25.4	3/8	9.5	5	6443BSPT1/8x28
BSPT 1/8	28	1" 5/16	33.4	7/16	11.1	5	6443BSPT1/8x28-1
BSPT 1/4	19	1" 5/16	33.4	7/16	11.1	5	6443BSPT1/4x19
BSPT 1/8	28	1" 1/2	38.1	1/2	12.7	5	6443BSPT1/8x28-2
BSPT 1/4	19	1" 1/2	38.1	1/2	12.7	5	6443BSPT1/4x19-1
BSPT 3/8	19	1" 1/2	38.1	1/2	12.7	5	6443BSPT3/8x19
BSPT 1/4	19	2"	50.8	5/8	15.9	5	6443BSPT1/4x19-2
BSPT 3/8	19	2"	50.8	5/8	15.9	5	6443BSPT3/8x19-1
BSPT 1/2	14	2"	50.8	5/8	15.9	6	6443BSPT1/2x14
BSPT 3/4	14	2"	50.8	5/8	15.9	6	6443BSPT3/4x14
BSPT 3/4	14	3"	76.2	7/8	22.2	6	6443BSPT3/4x14-1
BSPT 1"	11	3"	76.2	7/8	22.2	7	6443BSPT1"x11
BSPT 1"1/4	11	3"	76.2	7/8	22.2	8	6443BSPT1"1/4x11
BSPT 1"1/2	11	4"	101.6	1"	25.4	8	6443BSPT1"1/2x11
BSPT 2"	11	4"	101.6	1"	25.4	9	6443BSPT2"x11

Ordering example:

Bestellbeispiel:

Начин на заявяване:

Circular dies 6443BSPT1/8x28 HSS

Runde Schneideisen 6443BSPT1/8x28 HSS

Плашки кръгли 6443BSPT1/8x28 HSS

M  
Mf  
UNC  
UNF  
UNEF  
BSW  
BSF  
G  
PS  
BSPT  
NPS  
NPT  
NPTF  
PT  
PG  
BA

## Hexagon Die Nuts

for Tapered Withworth

Pipe thread according to BS 21  
Taper 1:16

## Sechskant-Schneidmuttern

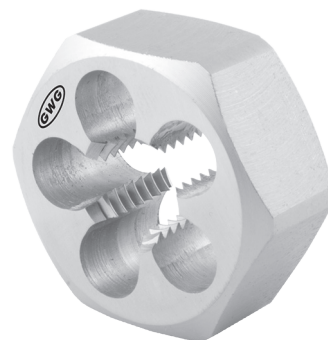
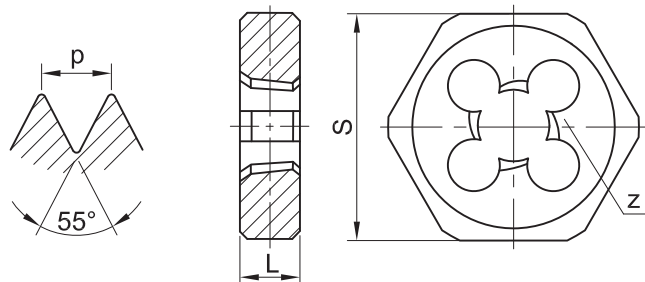
für Whithworth kegeliges

Rohrgewinde nach BS 21  
Kegel 1:16

## Плашки шестостенни

за Витвортова тръбна

конусна резба по BS 21  
Конус 1:16



# BSPT DIN 382

	Thread Gewinde Резба	p / inch	S mm	L mm	z	Art. No. 7143*..
BSF	BSPT 1/16	28	22	10	4	7143BSPT1/16x28
	BSPT 1/8	28	27	10	5	7143BSPT1/8x28
G	BSPT 1/4	19	36	14	5	7143BSPT1/4x19
	BSPT 3/8	19	41	15	5	7143BSPT3/8x19
PS	BSPT 1/2	14	50	19	6	7143BSPT1/2x14
	BSPT 3/4	14	60	20	6	7143BSPT3/4x14
BSPT	BSPT 5/8	14	50	19	6	7143BSPT5/8x14
	BSPT 7/8	14	60	20	6	7143BSPT7/8x14
NPS	BSPT 1"	11	60	24	7	7143BSPT1"x11
	BSPT 1"1/4	11	85	26	8	7143BSPT1"1/4x11
NPT	BSPT 1"1/2	11	85	26	8	7143BSPT1"1/2x11
	BSPT 1"3/4	11	100	31	8	7143BSPT1"3/4x11
NPTF	BSPT 2"	11	100	31	9	7143BSPT2"x11

Ordering example:

Bestellbeispiel:

Начин на заявяване:

Hexagon die nuts 7143BSPT1/16x28 HSS

Sechskant Schneidmuttern 7143BSPT1/16x28 HSS

Плашки шестостенни 7143BSPT1/16x28 HSS

## Circular Dies

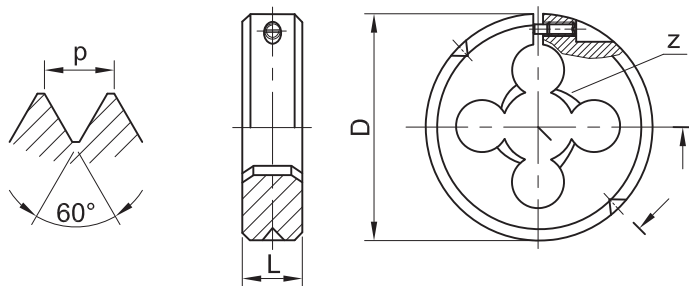
for American Parallel  
Pipe thread  
according to ANSI B1.20.1

## Runde Schneideisen

für Amerikanisches paralleles  
Rohrgewinde  
nach ANSI B1.20.1

## Плашки кръгли

за американска тръбна  
цилиндрична резба  
по ANSI B1.20.1



M

Mf

UNC

UNF

UNEF

BSW

# NPS JIS B 4451

Thread Gewinde Резба	p / inch	D mm	L mm	z	Art. No. 6793*..
NPS 1/8	27	50	11	4	6793NPS1/8x27
NPS 1/4	18	50	14	5	6793NPS1/4x18
NPS 3/8	18	50	14	5	6793NPS3/8x18
NPS 1/2	14	50	18	6	6793NPS1/2x14
NPS 3/4	14	50	22	8	6793NPS3/4x14
NPS 1"	11.5	50	25	10	6793NPS1"x11.5

BSF

G

PS

BSPT

NPS

NPT

NPTF

PT

PG

BA

Ordering example:  
Bestellbeispiel:  
Начин на заявяване:

Circular dies 6793NPS1/8x27 HSS  
Runde Schneideisen 6793NPS1/8x27 HSS  
Плашки кръгли 6793NPS1/8x27 HSS

### Circular Dies

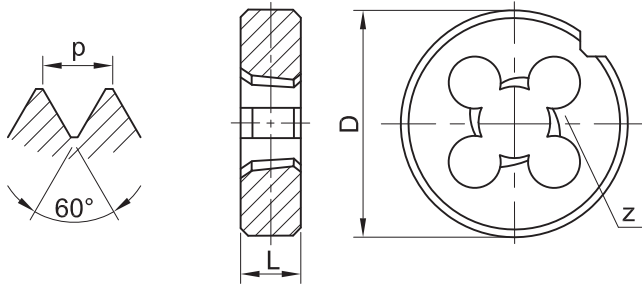
for American Tapered Pipe thread  
according to ANSI / ASME B1.20.1  
Taper 1:16  
**Form B** - closed

### Runde Schneideisen

für Amerikanisches kegeliges Rohr-  
gewinde nach ANSI / ASME B1.20.1  
Kegel 1:16  
**Form B** - geschlossen

### Плашки кръгли

за американска тръбна конусна  
резба по ANSI / ASME B1.20.1  
Конус 1:16  
**Форма В** - затворени



## NPT DIN EN 22 568 (DIN 223)

Thread Gewinde Резба	p / inch	D mm	L mm	z	Art. No. 6151*..
NPT 1/16	27	25	9	4	6151NPT1/16x27
NPT 1/8	27	30	11	5	6151NPT1/8x27
NPT 1/4	18	38	14	5	6151NPT1/4x18
NPT 3/8	18	45	14	5	6151NPT3/8x18
NPT 1/2	14	45	18	6	6151NPT1/2x14
NPT 3/4	14	55	22	6	6151NPT3/4x14
NPT 1"	11.5	65	25	7	6151NPT1"x11.5
NPT 1 1/4	11.5	75	26	8	6151NPT1 1/4x11.5
NPT 1 1/2	11.5	90	27	8	6151NPT1 1/2x11.5
NPT 2"	11.5	105	28	9	6151NPT2"x11.5

Ordering example: Circular dies 6151NPT1/16x27 HSS  
Bestellbeispiel: Runde Schneideisen 6151NPT1/16x27 HSS  
Начин на заявяване: Плашки кръгли 6151NPT1/16x27 HSS



### Circular Dies

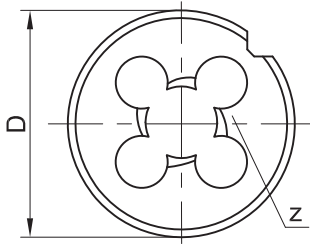
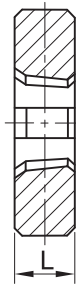
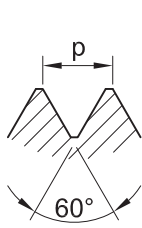
for American Tapered Pipe thread  
according to ANSI / ASME B1.20.1  
Taper 1:16  
**Form B** - closed

### Runde Schneideisen

für Amerikanisches kegeliges Rohr-  
gewinde nach ANSI / ASME B1.20.1  
Kegel 1:16  
**Form B** - geschlossen

### Плашки кръгли

за американска тръбна конусна  
резба по ANSI / ASME B1.20.1  
Конус 1:16  
**Форма В** - затворени



## NPT BS 1127

Thread Gewinde Резба	p / inch	D		L		z	Art. No. 6453*..
		inch	mm	inch	mm		
NPT 1/8	27	1"	25.4	3/8	9.5	5	6453NPT1/8x27
NPT 1/8	27	1" 5/16	33.4	7/16	11.1	5	6453NPT1/8x27-1
NPT 1/4	18	1" 5/16	33.4	7/16	11.1	5	6453NPT1/4x18
NPT 1/8	27	1" 1/2	38.1	1/2	12.7	5	6453NPT1/8x27-2
NPT 1/4	18	1" 1/2	38.1	1/2	12.7	5	6453NPT1/4x18-1
NPT 3/8	18	1" 1/2	38.1	1/2	12.7	5	6453NPT3/8x18
NPT 1/4	18	2"	50.8	5/8	15.9	5	6453NPT1/4x18-2
NPT 3/8	18	2"	50.8	5/8	15.9	5	6453NPT3/8x18-1
NPT 1/2	14	2"	50.8	5/8	15.9	6	6453NPT1/2x14
NPT 3/4	14	2"	50.8	5/8	15.9	6	6453NPT3/4x14
NPT 1"	11.5	3"	76.2	7/8	22.2	7	6453NPT1"x11.5
NPT 1"1/4	11.5	3"	76.2	7/8	22.2	8	6453NPT1"1/4x11.5
NPT 1"1/2	11.5	4"	101.6	1"	25.4	8	6453NPT1"1/2x11.5
NPT 2"	11.5	4"	101.6	1"	25.4	9	6453NPT2"x11.5
NPT 2"1/2	8	5"	127.0	1" 1/2	38.1	10	6453NPT2"1/2x8
NPT 3"	8	5"	127.0	1" 1/2	38.1	12	6453NPT3"x8

Ordering example:  
Bestellbeispiel:  
Начин на заявяване:

Circular dies 6453NPT1/8x27 HSS  
Runde Schneideisen 6453NPT1/8x27 HSS  
Плашки кръгли 6453NPT1/8x27 HSS

M  
Mf  
UNC  
UNF  
UNEF  
BSW  
BSF  
G  
PS  
BSPT  
NPS  
NPT  
NPTF  
PT  
PG  
BA

## Hexagon Die Nuts

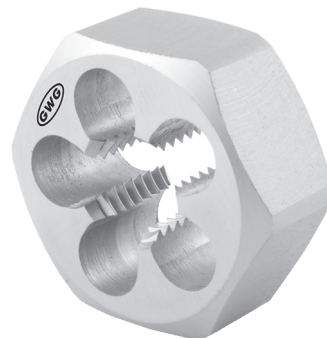
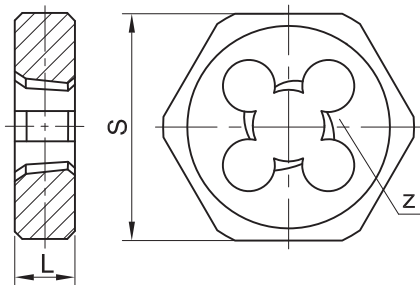
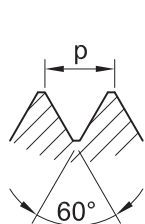
for American Tapered Pipe thread  
according to ANSI / ASME B1.20.1  
Taper 1:16

## Sechskant-Schneidmuttern

für Amerikanisches kegeliges Rohr-  
gewinde nach ANSI / ASME B1.20.1  
Kegel 1:16

## Плашки шестостенни

за американска тръбна конусна  
резба по ANSI / ASME B1.20.1  
Конус 1:16



# NPT DIN 382

	Thread Gewinde Резба	p / inch	S mm	L mm	z	Art. No. 7151*..
	NPT 1/16	27	22	9	4	7151NPT1/16x27
	NPT 1/8	27	27	11	5	7151NPT1/8x27
G	NPT 1/4	18	36	14	5	7151NPT1/4x18
	NPT 3/8	18	41	14	5	7151NPT3/8x18
PS	NPT 1/2	14	41	18	6	7151NPT1/2x14
	NPT 3/4	14	50	22	6	7151NPT3/4x14
BSPT	NPT 5/8	14	50	22	6	7151NPT5/8x14
	NPT 7/8	14	60	25	6	7151NPT7/8x14
	NPT 1"	11.5	60	25	7	7151NPT1"x11.5
NPS	NPT 1"1/4	11.5	70	26	8	7151NPT1"1/4x11.5
	NPT 1"1/2	11.5	85	27	8	7151NPT1"1/2x11.5
	NPT 2"	11.5	100	28	9	7151NPT2"x11.5

Ordering example:  
Bestellbeispiel:  
Начин на заявяване:

Hexagon die nuts 7151NPT1/16x27 HSS  
Sechskant Schneidmuttern 7151NPT1/16x27 HSS  
Плашки шестостенни 7151NPT1/16x27 HSS

### Circular Dies

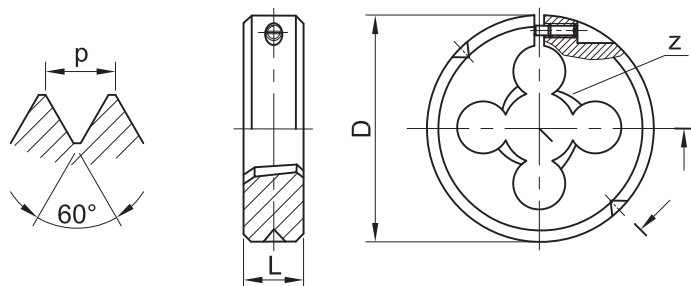
for American Tapered Pipe thread  
according to ANSI / ASME B1.20.1  
Taper 1:16

### Runde Schneideisen

für Amerikanisches kegeliges Rohr-  
gewinde nach ANSI / ASME B1.20.1  
Kegel 1:16

### Плашки кръгли

за американска тръбна конусна  
резба по ANSI / ASME B1.20.1  
Конус 1:16



## NPT JIS B 4451

Thread Gewinde Резба	p / inch	D mm	L mm	z	Art. No. 6753*..
NPT 1/8	27	38	11	4	6753NPT1/8x27
NPT 1/4	18	38	14	5	6753NPT1/4x18
NPT 3/8	18	38	14	7	6753NPT3/8x18
NPT 1/8	27	50	11	4	6753NPT1/8x27-1
NPT 1/4	18	50	14	5	6753NPT1/4x18-1
NPT 3/8	18	50	14	5	6753NPT3/8x18-1
NPT 1/2	14	50	18	6	6753NPT1/2x14
NPT 3/4	14	50	22	8	6753NPT3/4x14
NPT 1"	11.5	50	25	10	6753NPT1"x11.5
NPT 1 1/4"	11.5	63	26	10	6753NPT1 1/4"x11.5

Ordering example:  
Bestellbeispiel:  
Начин на заявяване:

Circular dies 6753NPT1/8x27 HSS  
Runde Schneideisen 6753NPT1/8x27 HSS  
Плашки кръгли 6753NPT1/8x27 HSS

M  
Mf  
UNC  
UNF  
UNEF  
BSW  
BSF  
G  
PS  
BSPT  
NPS  
NPT  
NPTF  
PT  
PG  
BA

## Circular Dies

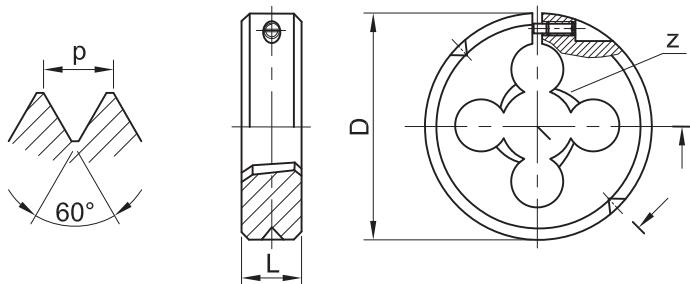
for Dryseal American Tapered  
Pipe thread  
according to ANSI / ASME B1.20.3  
Taper 1:16

## Runde Schneideisen

für Amerikanisches kegeliges  
Rohrgewinde, selbstdichtend  
nach ANSI / ASME B1.20.3  
Kegel 1:16

## Плашки кръгли

за американска тръбна плътна  
конусна резба  
по ANSI / ASME B1.20.3  
Конус 1:16



# NPTF JIS B 4451

Thread Gewinde Резба	p / inch	D mm	L mm	z	Art. No. 67531*..
NPTF 1/8	27	50	11	4	67531NPTF1/8x27
NPTF 1/4	18	50	14	5	67531NPTF1/4x18
NPTF 3/8	18	50	14	5	67531NPTF3/8x18
NPTF 1/2	14	50	18	6	67531NPTF1/2x14
NPTF 3/4	14	50	22	8	67531NPTF3/4x14
NPTF 1"	11.5	50	25	10	67531NPTF1"x11.5

Ordering example: Circular dies 67531NPTF1/8x27 HSS  
Bestellbeispiel: Runde Schneideisen 67531NPTF1/8x27 HSS  
Начин на заявяване: Плашки кръгли 67531NPTF1/8x27 HSS

## Circular Dies

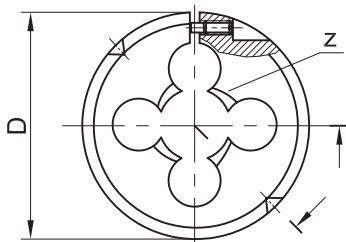
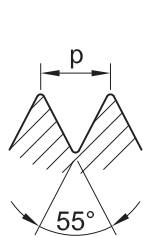
for Tapered Pipe thread  
according to JIS B 0203  
Taper 1:16

## Runde Schneideisen

für kegeliges Rohrgewinde  
nach JIS B 0203  
Kegel 1:16

## Плашки кръгли

за тръбна конусна резба  
по JIS B 0203  
Конус 1:16



# PT JIS B 4451

Thread Gewinde Резба	p / inch	D mm	L mm	z	Art. No. 6743*..
PT 1/8	28	38	11	4	6743PT1/8x28
PT 1/4	19	38	16	5	6743PT1/4x19
PT 3/8	19	38	18	7	6743PT3/8x19
PT 1/8	28	50	11	4	6743PT1/8x28-1
PT 1/4	19	50	16	5	6743PT1/4x19-1
PT 3/8	19	50	18	5	6743PT3/8x19-1
PT 1/2	14	50	22	6	6743PT1/2x14
PT 3/4	14	50	24	8	6743PT3/4x14
PT 1"	11	50	28	10	6743PT1"x11
PT 1"	11	63	28	8	6743PT1"x11
PT 1"1/4	11	63	31.75	11	6743PT1"1/4x11
PT 1"1/4	11	75	31.75	10	6743PT1"1/4x11-1

Ordering example:  
Bestellbeispiel:  
Начин на заявяване:

Circular dies 6743PT1/8x28 HSS  
Runde Schneideisen 6743PT1/8x28 HSS  
Плашки кръгли 6743PT1/8x28 HSS

M  
Mf  
UNC  
UNF  
UNEF  
BSW  
BSF  
G  
PS  
BSPT  
NPS  
NPT  
NPTF  
PT  
PG  
BA



## Circular Dies

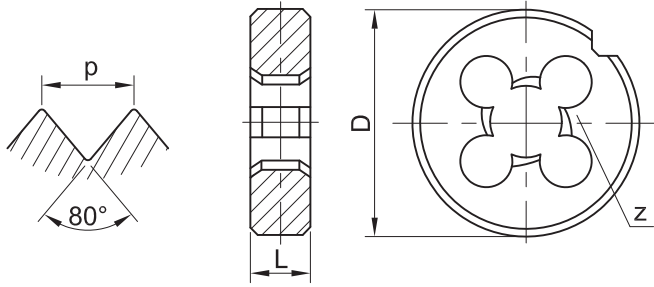
for Steel Conduit thread  
according to DIN 40430  
Form B - closed

## Runde Schneideisen

für Stahlpanzerrohrgewinde  
nach DIN 40430  
Form B - geschlossen

## Плашки кръгли

за електроарматурна резба  
по DIN 40430  
Форма В - затворени



# PG DIN 40434

	Thread Gewinde Резба	p / inch	D mm	L mm	z	Art. No. 6171*..
BSW	PG 7	20	38	10	4	6171PG7x20
	PG 9	18	45	14	5	6171PG9x18
	PG 11	18	45	14	5	6171PG11x18
	PG 13.5	18	45	14	5	6171PG13.5x18
BSF	PG 16	18	55	16	5	6171PG16x18
	PG 21	16	65	18	5	6171PG21x16
	PG 29	16	65	18	7	6171PG29x16
G	PG 36	16	90	22	7	6171PG36x16
	PG 42	16	105	22	8	6171PG42x16
PS	PG 48	16	105	22	8	6171PG48x16

BSW

BSF

G

PS

BSPT

NPS

NPT

NPTF

PT

PG

BA

Ordering example: Circular dies 6171PG7x20 HSS  
 Bestellbeispiel: Runde Schneideisen 6171PG7x20 HSS  
 Начин на заявяване: Плашки кръгли 6171PG7x20 HSS

## Circular Dies

for British Association screw thread  
according to BS 93

Form A - cut

## Runde Schneideisen

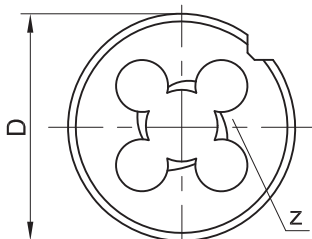
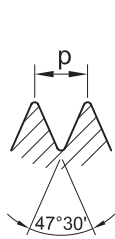
für British Association Gewinde  
nach BS 93

Form A - geschlitzt

## Плашки кръгли

за резба на Британската  
асоциация по BS 93

Форма А - прорязани



# BA BS 1127

Thread Gewinde Резба	p mm	D		L		z	Art. No. 6463*..
		inch	mm	inch	mm		
BA 0	1.0	13/16	20.6	1/4	6.35	4	6463BA0
BA 1	0.9	13/16	20.6	1/4	6.35	4	6463BA1
BA 2	0.81	13/16	20.6	1/4	6.35	3	6463BA2
BA 3	0.73	13/16	20.6	1/4	6.35	3	6463BA3
BA 4	0.66	13/16	20.6	1/4	6.35	3	6463BA4
BA 5	0.59	13/16	20.6	1/4	6.35	3	6463BA5
BA 6	0.53	13/16	20.6	1/4	6.35	3	6463BA6
BA 7	0.48	13/16	20.6	1/4	6.35	3	6463BA7

M

Mf

UNC

UNF

UNEF

BSW

BSF

G

PS

BSPT

NPS

NPT

NPTF

PT

PG

BA

Ordering example:

Circular dies 6463BA0 HSS

Bestellbeispiel:

Runde Schneideisen 6463BA0 HSS

Начин на заявяване:

Плашки кръгли 6463BA0 HSS

## Hexagon Die Nuts

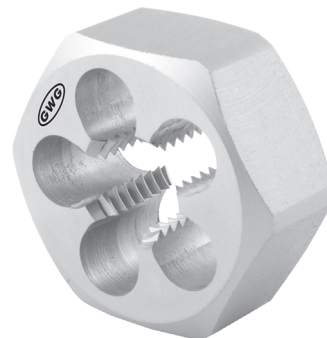
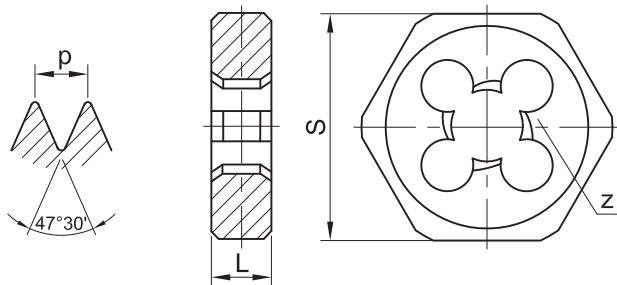
for British Association screw thread according to BS 93

## Sechskant-Schneidmuttern

für British Association Gewinde nach BS 93

## Плашки шестостенни

за резба на Британската асоциация по BS 93



# BA DIN 382

	Thread Gewinde Резба	p mm	S mm	L mm	z	Art. No. 7161*..
	BA 0	1.0	19	7	4	7161BA0
	BA 1	0.9	19	7	4	7161BA1
	BA 2	0.81	19	7	3	7161BA2
	BA 3	0.73	19	7	3	7161BA3
	BA 4	0.66	19	5	3	7161BA4
	BA 5	0.59	19	5	3	7161BA5

M

Mf

UNC

UNF

UNEF

BSW

BSF

G

PS

BSPT

NPS

NPT

NPTF

PT

PG

BA

Ordering example:  
Bestellbeispiel:  
Начин на заявяване:

Hexagon die nuts 7161BA0 HSS  
Sechskant Schneidmuttern 7161BA0 HSS  
Плашки шестостенни 7161BA0 HSS